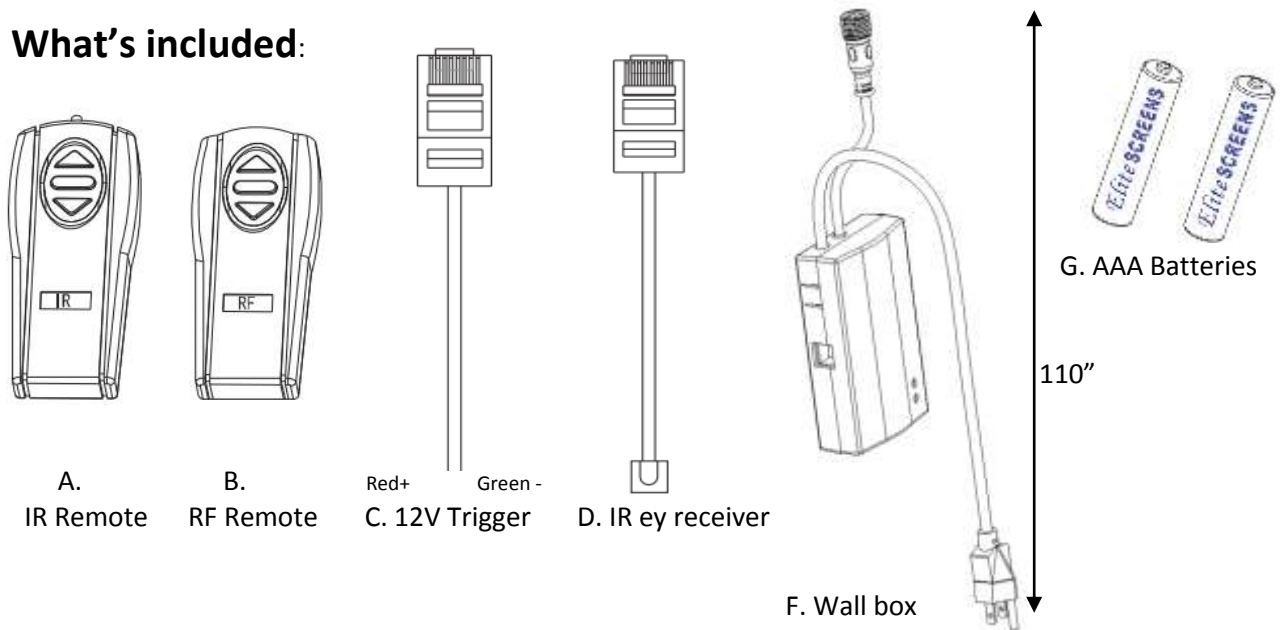




ZPM-RT

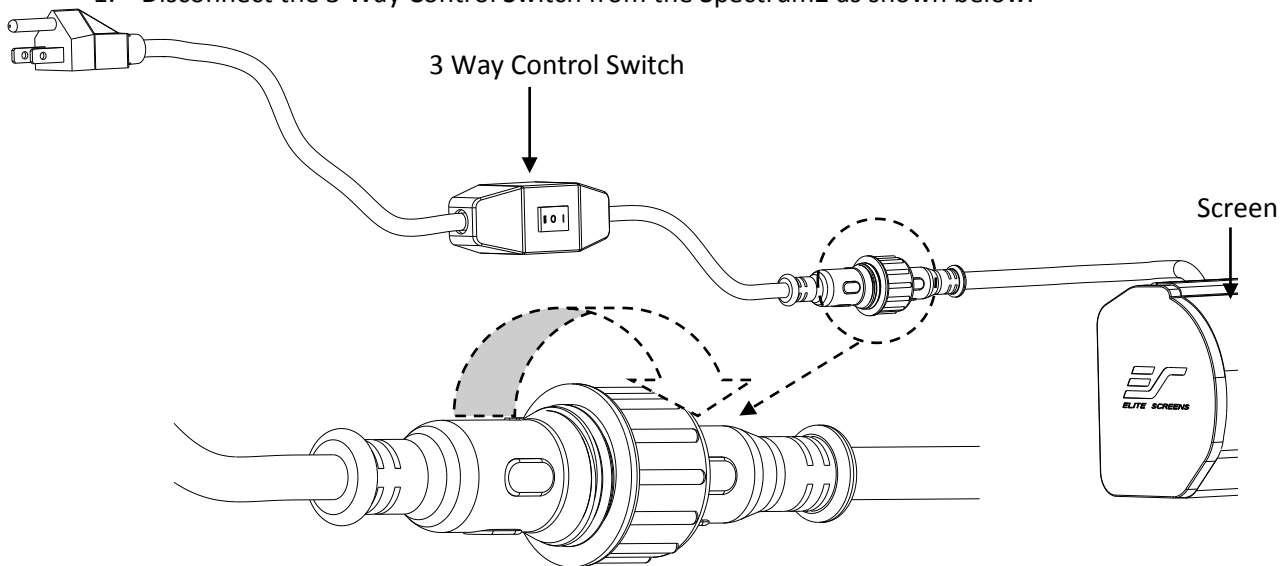
Remote Control Kit for Spectrum2 Series

What's included:

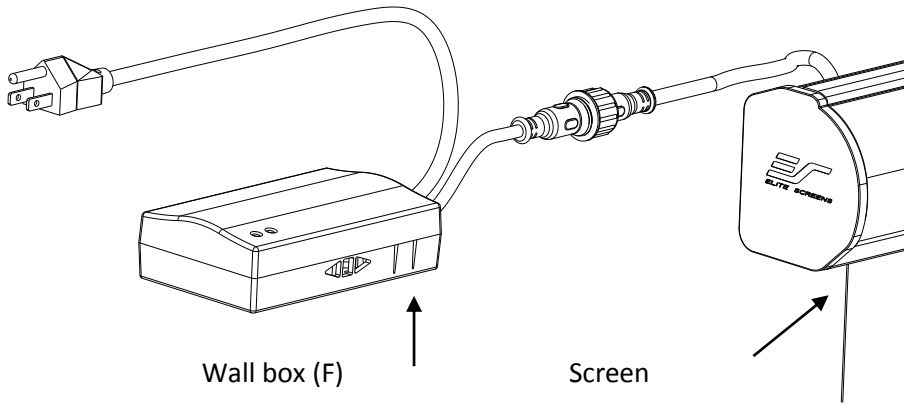


ZPM-RT Installation & Control Instructions 1

1. Disconnect the 3 Way Control Switch from the Spectrum2 as shown below.



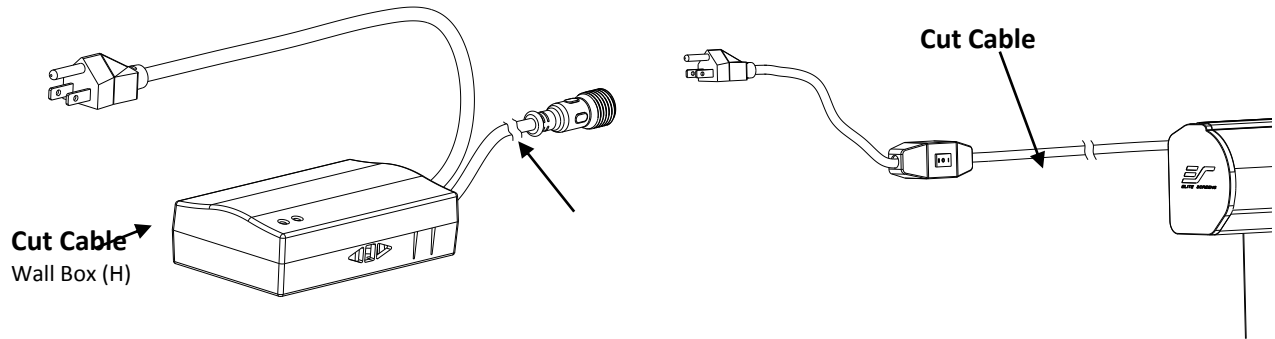
2. Connect the **Wall Box (F)** to the screen as shown below.



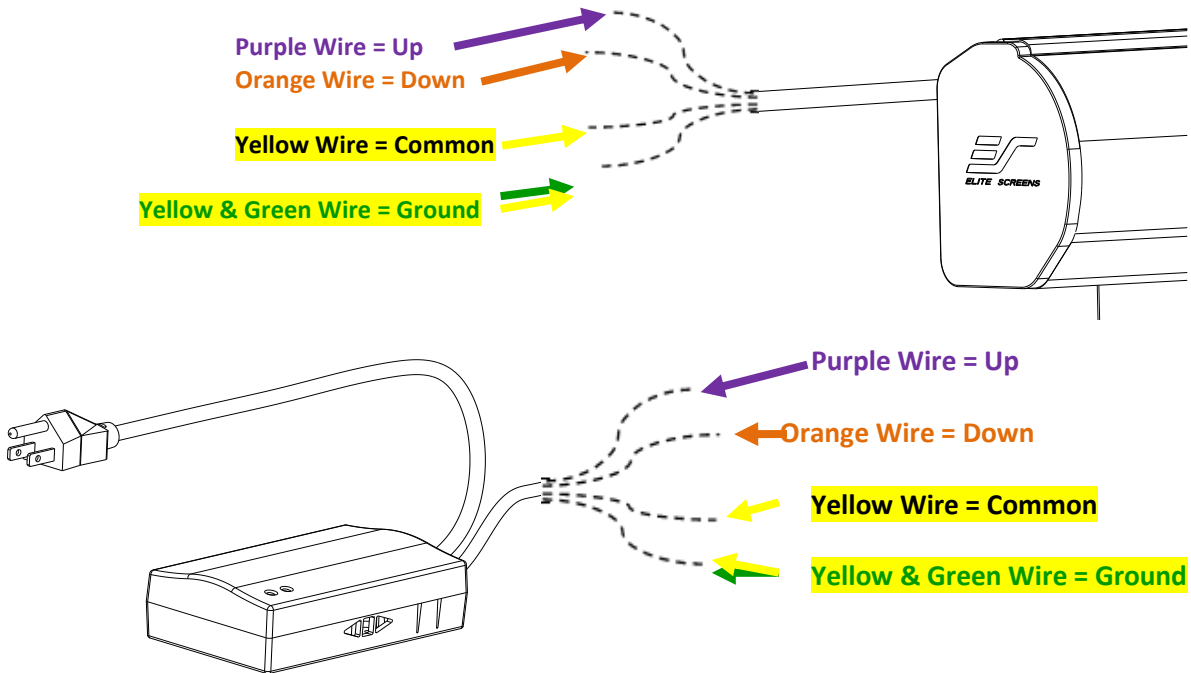
ZPM-RT Installation & Control Instructions 2

Please consult a professional installer for this procedure. Elite Screens is not responsible for faulty installations.

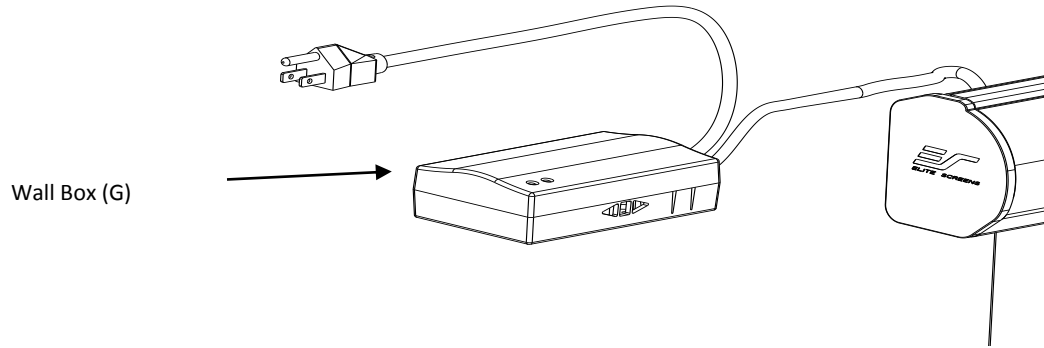
1. Cut the cable of both the Wall Box (H) and the attached Control Switch to expose the wires.



2. Connect the wires from the screen to the Wall box (H) according to their specific color.

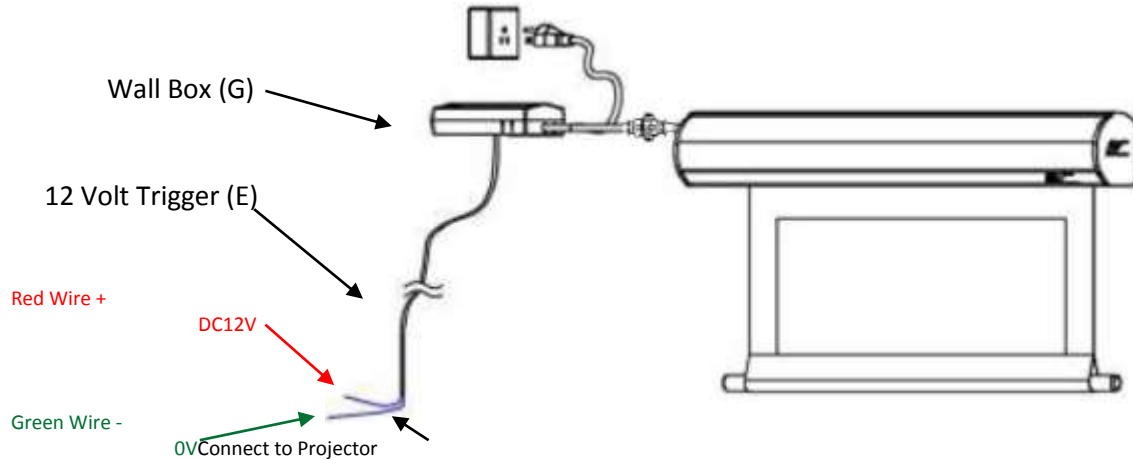


3. The Wall Box (H) should be connected to your screen as shown below.



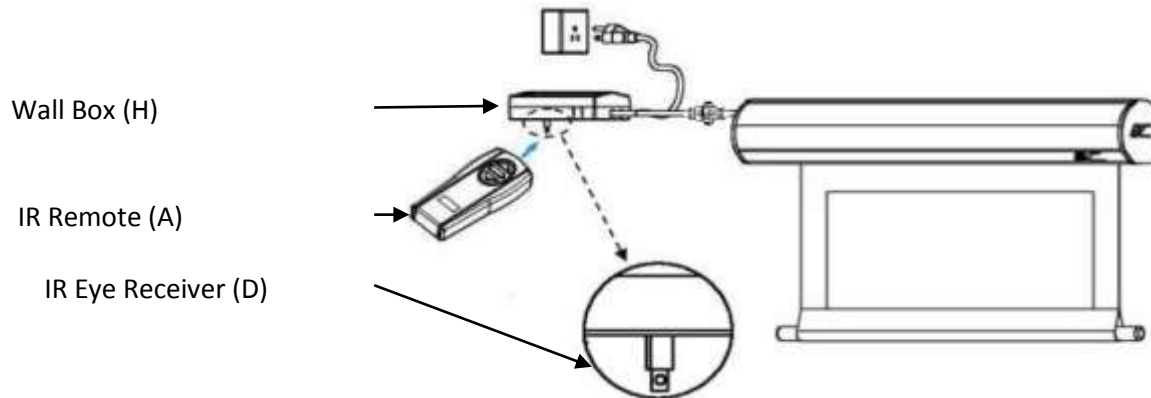
12 Volt Trigger (E)

1. Connect the 12 Volt Trigger (C) to the Wall Box (H) for set up to your projector.



IR Eye Receiver (D)

1. Connect the IR Eye Receiver (D) to the Wall Box (H) for high wall or ceiling installations



For a local Elite Screens contact or Technical Support, please visit

www.elitescreens.com