



How to adjust the tension string for ETB/ITE series

Adjustment tool needed: 5/32 Allen wrench

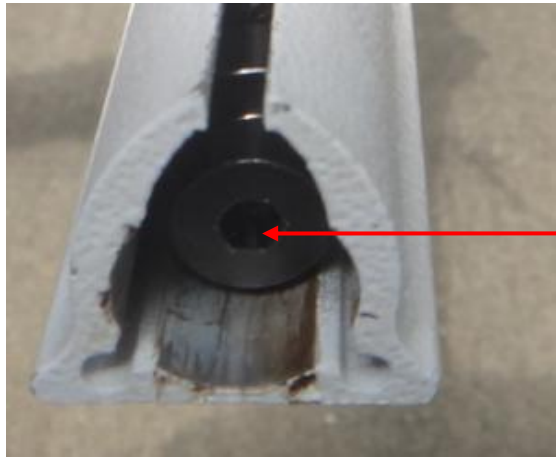


Warning: Do not over-tighten the string by making it stiff as this will cause the string to snap when deploying and retracting.

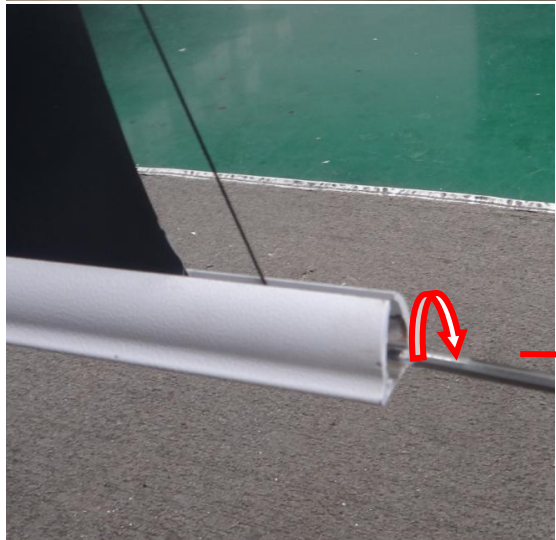
1. Remove the plastic end cap of the weight bar.



2. Insert the Allen wrench into the adjustment Allen screw and push in the Allen wrench as you rotate it clockwise.



Adjustment screw



Turn Clock-wise to tighten
the tension string

Note: To loosen the tension string, turn the Allen wrench counter-clockwise.

3. After adjusting the tension string, replace the weight bar end cap.

