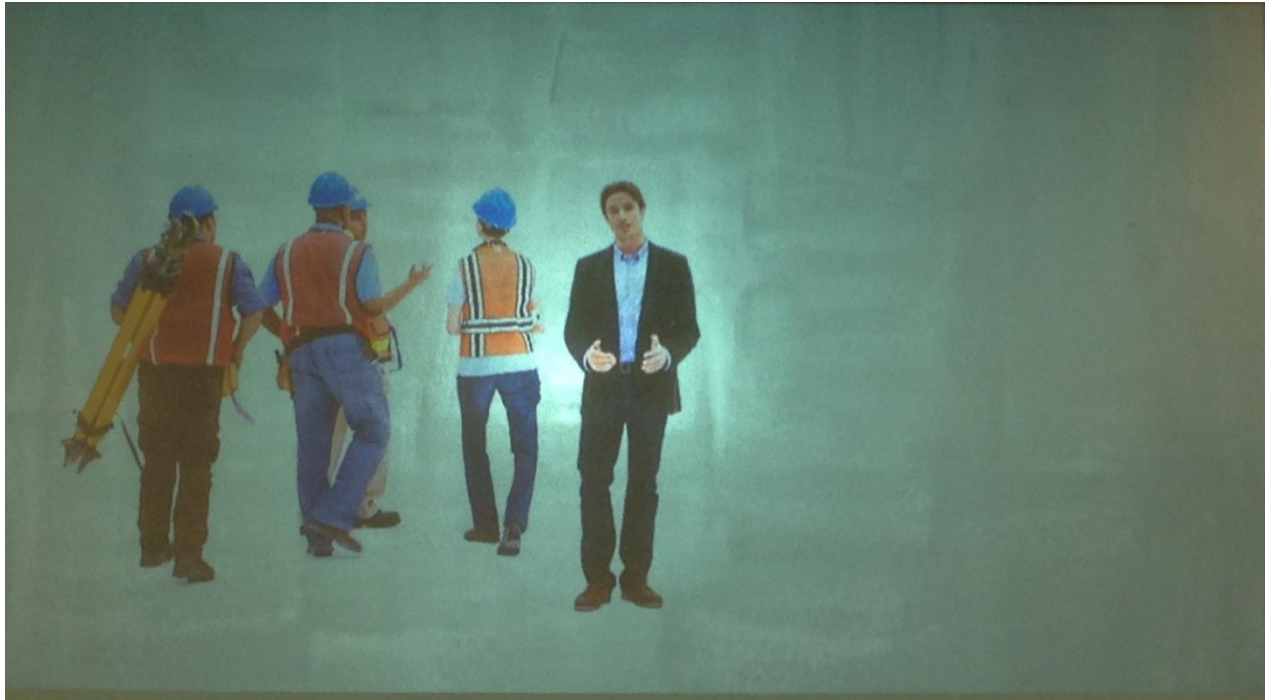


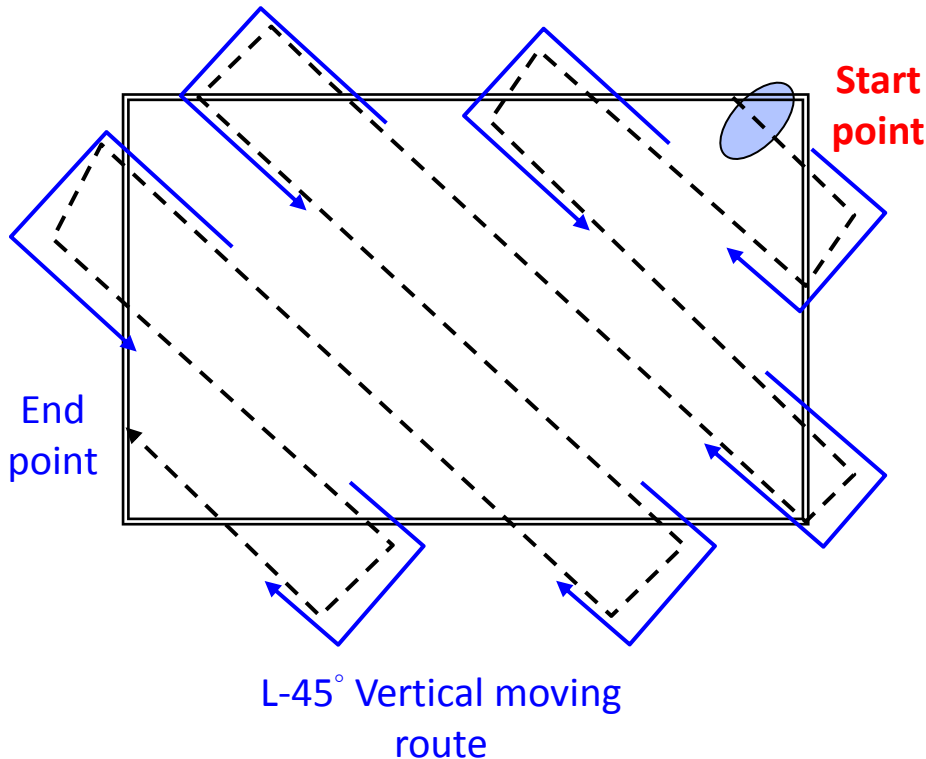


Fixing the “Stripe” Effect on ChromaFlux Paint

Sample of “stripe” effect



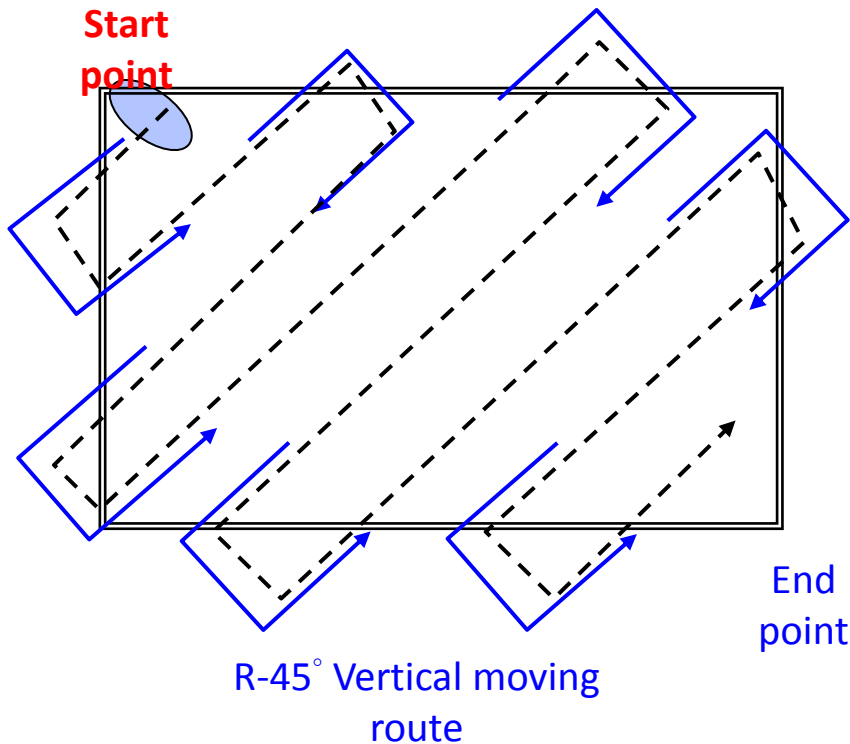
L-45° Horizontal-ellipse painting with L-45° vertical application route



Description:

1. **Paint output shape:** L-45° horizontal-ellipse.
2. **Application route:** L-45° vertical moving from top-right towards bottom-left in a sweeping motion following the path shown in the illustration.
3. **Overlap ratio of painting:** Approximately 1/3.

R-45° Horizontal-ellipse painting with R-45° vertical application route

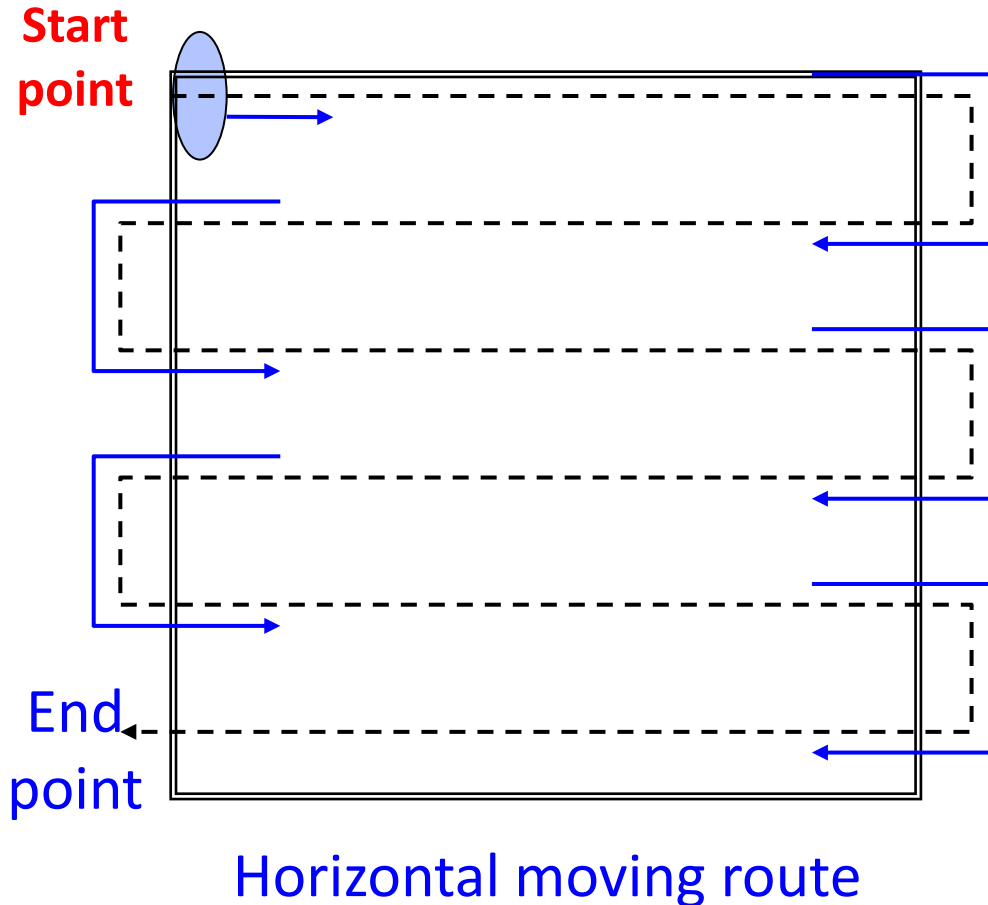


Description:

- 1. Paint output shape:** R-45° horizontal-ellipse.
- 2. Application route:** R-45° vertical moving from top-left towards bottom-right in a sweeping motion following the path shown in the illustration.
- 3. Overlap ratio of painting:** Approximately 1/3.

- When spraying the paint, use the maximum output option of the spray gun. The output should give you the largest spray width and maximum amount of paint flow.
- When applying the paint , you should be as far away from the wall as the gun allows. When the paint is sprayed, it should cover a minimum of approximately 30cm (12") of the base. If you cannot achieve the above mentioned specifications, an alternative option is to move faster along the painting route shown on page 2 and 3. The spray width of the route will have to be larger if using this method.
- When you complete the steps on pages 2 and 3, some minor lines may be visible but not as apparent as before.
- If the lines are at angle similar to the painting route, try painting along the route indicated on pages 5 and 6. If possible, you should also increase the distance between you and wall.
- Since the paint has been applied from different angles, the appearance of the screen should seem much uniform.

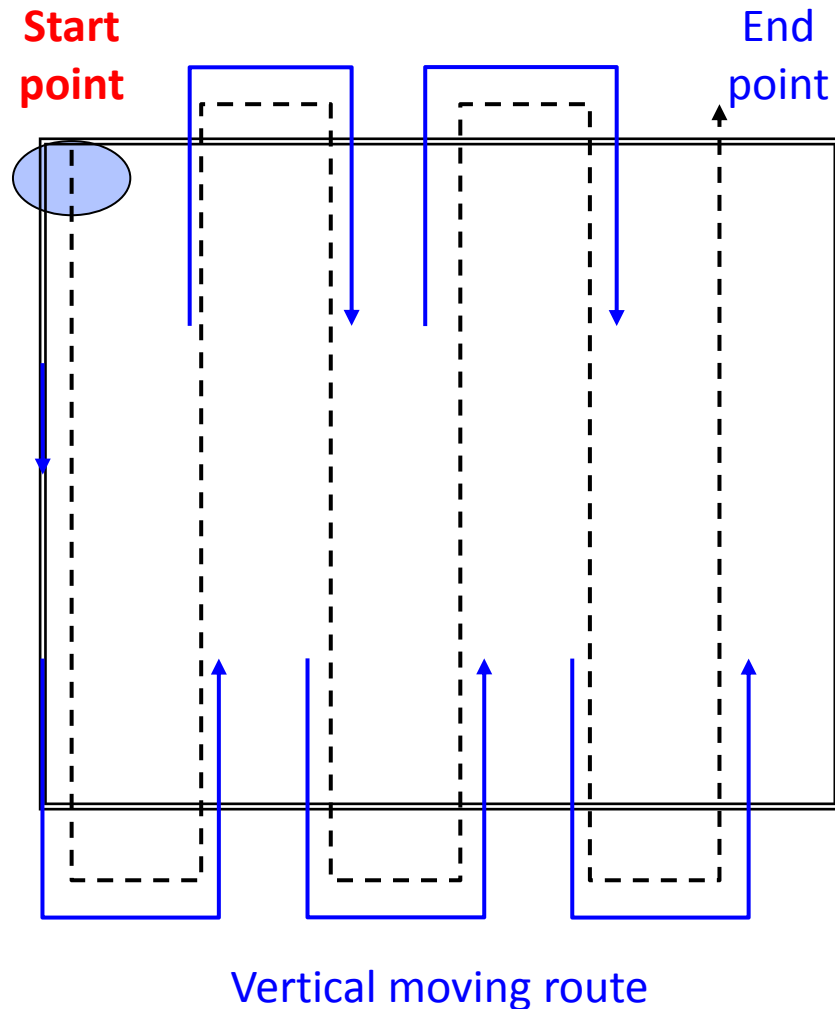
Vertical-ellipse painting with horizontal application route



Description:

1. **Paint Output shape:** vertical-ellipse.
2. **Application route:** horizontal moving from the top-left and continuing down in a sweeping motion following the path shown in the illustration.
3. **Overlap ratio of painting:** Approximately 1/3.

Horizontal-ellipse painting with vertical application route



Description:

1. Paint output shape: Horizontal-ellipse.

2. Application route: Vertical moving from the top-left and continuing towards the right in a sweeping motion following the path shown in the illustration.

3. Overlap ratio of painting: Approximately $1/3$.