



# Designer Cut Series A4K

Acoustically Transparent Projection Material

Model# RM-163H-A4K

## Care & Use

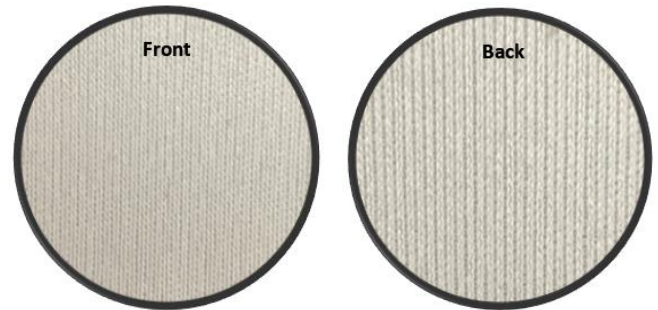
The **Designer Cut A4K** is a pre-cut acoustically transparent front projection screen material for use in custom solutions and other improvised installations according to the integrator's needs.

Elite Screens wants you to enjoy your **Designer Cut A4K** for many years to come! We made the Designer Cut materials available for you to be able to fully customize your screen project. Please note that ALL Designer Cut are raw materials that require specific properties to be adhered during installation to obtain an enjoyable viewing experience.

### Installation Tips and Precautions

#### PROJECTION SIDE

1. Please make note on the label on the material to indicate the projection side. See pictures for reference.



2. Never place your screen over a window or under consistent sun exposure. Solar radiation breaks down synthetic projection materials, so it is best to keep them away from direct sunlight.

**NOTE:** The A4K material may require sound transparent backing to reduce projection reflectivity depending on your DIY project. Speaker fabric or dark colored mesh fabric is highly recommended and readily available at most fabric stores.



### Maintenance

#### Wrinkles/Creases:

- The material may have minor wrinkles which will get removed after stretching it over a frame or a mounting system that allows tensioning. You can also use a handheld fabric steamer to remove wrinkles or creases.

#### Dust/Dirt:

- A feather duster should be used to remove loose dirt or dust. Use warm water with a toothbrush to clean dirt or dust spots. **Do not use soap as it will stain the material.**
- Don't use acetone, benzene, alcohol, and any other organic solvents to clean the screen material. Using such chemicals will permanently damage the screen.

We take great care in packaging the **Designer Cut** series of materials so that they arrive at your doorstep with zero issues. Should your screen arrive with any shipping damage or show signs of damage, we urge you to contact us directly so that we can provide a speedy resolution – we always strive for the best customer experience and are here to help.

**For Technical Support or an Elite Screens contact in your area,  
visit [www.elitescreens.com](http://www.elitescreens.com)**