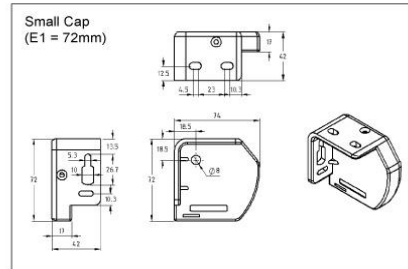
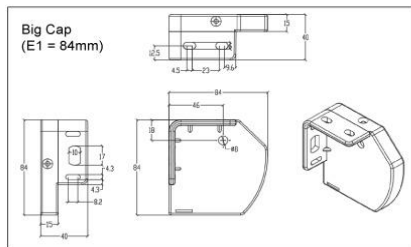
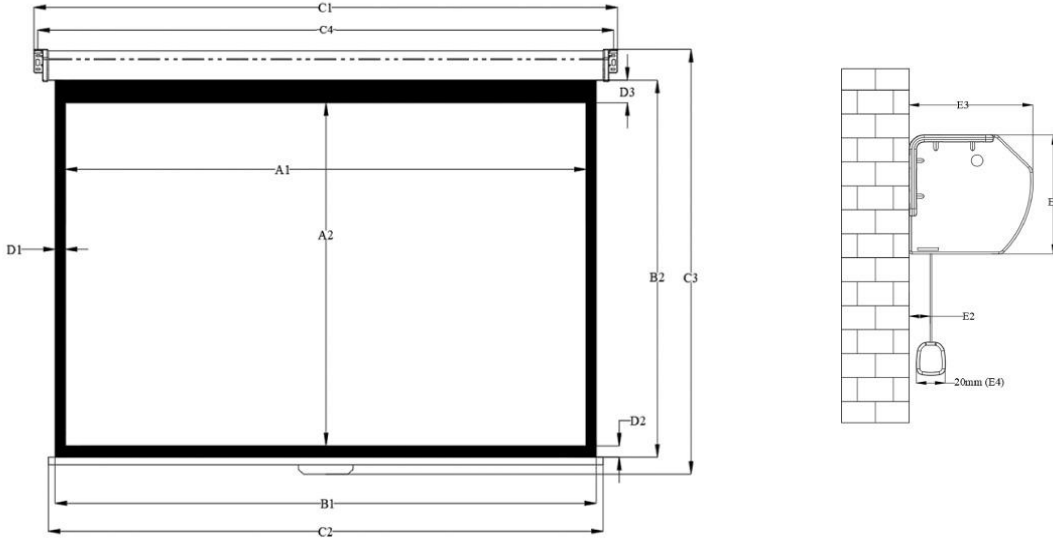


### Manual Series Dimensions Table - Z Type (Inches)

Model Number	Diag. Size	Aspect Ratio	View Width (A1)	View Height (A2)	Screen Width (B1)	Screen Height (B2)	Overall Case Length (C1)	WeightBar Length (C2)	Overall Height (C3)	Screw Hole Distance (C4)	L/R Borders (D1)	Bottom Border (D2)	Top Border (D3)	End Cap Height (E1)	E2	E3	E4
Unit: inch																	
M80NWV	80"	4:3	64.2	48.0	66.5	52.0	71.1	68.5	56.9	70.6	1.2	1.2	2.8	2.9	2.9	0.7	0.8
M84NWV	84"	4:3	67.3	50.4	69.3	54.1	73.8	71.3	59.1	73.5	1.0	1.0	2.8	2.9	2.9	0.7	0.8
M100UWV1	100"	4:3	79.9	59.8	82.7	59.8	87.2	84.6	64.8	86.3	1.4	1.4	2.8	2.9	2.9	0.7	0.8
M100NWV1	100"	4:3	79.9	59.8	82.7	59.8	87.2	84.6	64.8	86.3	1.4	1.4	2.8	2.9	2.9	0.7	0.8
M120UWV2	120"	4:3	96.1	72.0	98.4	76.0	103.0	100.4	80.9	102.4	1.2	1.2	2.8	2.9	2.9	0.7	0.8
M135XWV2	135"	4:3	107.9	81.1	110.2	85.0	114.8	112.2	90.6	114.2	1.2	1.2	2.8	3.3	3.3	0.7	0.8
M150UWV2	150"	4:3	120.1	89.8	122.4	93.7	127.0	124.4	99.2	126.5	1.2	1.2	2.8	3.3	3.3	0.7	0.8
M80UWH	80"	16:9	69.7	39.4	72.0	52.4	76.9	73.2	55.6	76.1	1.2	1.2	11.8	2.8	0.6	2.9	0.8
M84UWH	84"	16:9	73.2	41.3	75.6	54.3	80.4	76.8	57.6	79.6	1.2	1.2	11.8	2.8	0.6	2.9	0.8
M92UWH	92"	16:9	80.3	45.3	82.7	58.3	87.5	83.9	61.5	86.7	1.2	1.2	11.8	2.8	0.6	2.9	0.8
M100UWH	100"	16:9	87.2	49.2	89.8	63.0	94.6	91.7	66.3	93.8	1.3	1.2	12.6	2.8	0.6	2.9	0.8
M100XWH	100"	16:9	87.2	49.2	89.8	63.0	94.6	91.7	66.3	93.8	1.3	1.2	12.6	2.8	0.6	2.9	0.8
M106UWH	106"	16:9	92.5	52.0	94.9	65.7	99.7	96.9	69.0	98.9	1.2	1.2	12.6	2.8	0.6	2.9	0.8
M120UWH2	120"	16:9	104.7	59.1	107.1	72.8	111.9	109.1	76.1	111.1	1.2	1.2	12.6	3.3	0.6	3.3	0.8
M120XWH2	120"	16:9	104.7	59.1	107.1	72.0	111.9	108.3	75.3	111.1	1.2	1.2	11.8	3.3	0.6	3.3	0.8
M135UWH2	135"	16:9	117.7	66.1	120.1	79.1	124.9	121.3	83.0	124.1	1.2	1.2	11.8	3.3	0.6	3.3	0.8
M142UWH2	142"	16:9	123.6	69.7	126.0	83.1	130.8	128.0	86.9	130.0	1.2	1.2	12.2	3.3	0.6	3.3	0.8
M150UWH2	150"	16:9	130.7	73.6	133.1	86.6	137.9	135.0	90.4	137.1	1.2	1.2	11.8	3.3	0.6	3.3	0.8
M150XWH2	150"	16:9	130.7	73.6	133.1	86.6	137.9	135.0	90.4	137.1	1.2	1.2	11.8	3.3	0.6	3.3	0.8
M86UWX	86"	16:10	72.8	45.7	75.2	54.7	80.0	77.2	58.0	79.2	1.2	1.2	7.9	2.8	0.6	2.9	0.8
M94UWX	94"	16:10	79.5	50.0	81.9	59.1	86.7	83.9	62.3	85.9	1.2	1.2	7.9	2.8	0.6	2.9	0.8
M128UWX	128"	16:10	108.7	67.7	111.0	76.8	115.6	112.2	82.3	114.8	1.2	1.2	7.9	3.3	0.7	3.3	0.8
M139UWX	139"	16:10	117.7	73.6	120.1	82.7	124.6	121.3	88.2	123.8	1.2	1.2	7.9	3.3	0.7	3.3	0.8
M71XWS1	71"	1:1	50.0	50.0	52.4	53.9	56.9	54.3	58.9	56.5	1.2	1.2	2.8	2.9	2.9	0.7	0.8
M85UWS1	85"	1:1	59.8	59.8	62.2	63.8	66.7	64.2	68.7	67.1	1.2	1.2	2.8	2.9	2.9	0.7	0.8
M99NWS1	99"	1:1	70.1	70.1	72.8	74.2	77.4	74.8	79.1	105.4	1.4	1.4	2.8	2.9	2.9	0.7	0.8
M113NWS1	113"	1:1	79.9	79.9	82.3	83.9	86.8	84.3	88.8	119.2	1.2	1.2	2.8	2.9	2.9	0.7	0.8

Note: Data Error may be ±1"

The listed measurements are for general reference only. Please contact Elite Screens to verify product design and dimensions before attempting to integrate its products with any structural or furniture modification. Although a manufacturer may offer product advice, it may be taken or disregarded at the integrator's discretion. Elite Screens will not be held responsible or be otherwise liable for faulty installations.



### Manual Series Dimensions Table - Z Type (mm)

Model Number	Diag. Size	Aspect Ratio	View Width (A1)	View Height (A2)	Screen Width (B1)	Screen Height (B2)	Overall Case Length (C1)	WeightBar Length (C2)	Overall Height (C3)	Screw Hole Distance (C4)	L/R Borders (D1)	Bottom Border (D2)	Top Border (D3)	End Cap Height (E1)	E2	E3	E4
Unit: mm																	
M80NWV	80"	4:3	1630	1220	1690	1320	1805	1740	1445	1792	30	30	70	74	74	18	20
M84NWV	84"	4:3	1710	1280	1760	1375	1875	1810	1500	1867	25	25	70	74	74	18	20
M100UWV1	100"	4:3	2030	1520	2100	1520	2215	2150	1645	2192	35	35	70	74	74	18	20
M100NWV1	100"	4:3	2030	1520	2100	1520	2215	2150	1645	2192	35	35	70	74	74	18	20
M120UWV2	120"	4:3	2440	1830	2500	1930	2615	2550	2055	2601	30	30	70	74	74	18	20
M135XWV2	135"	4:3	2740	2060	2800	2160	2915	2850	2300	2901	30	30	70	85	85	18	20
M150UWV2	150"	4:3	3050	2280	3110	2380	3225	3160	2520	3212	30	30	70	85	85	18	20
M80UWH	80"	16:9	1770	1000	1830	1330	1952	1860	1413	1932	30	30	300	72	15	74	20
M84UWH	84"	16:9	1860	1050	1920	1380	2042	1950	1463	2022	30	30	300	72	15	74	20
M92UWH	92"	16:9	2040	1150	2100	1480	2222	2130	1563	2202	30	30	300	72	15	74	20
M100UWH	100"	16:9	2214	1250	2280	1600	2402	2330	1683	2383	33	30	320	72	15	74	20
M100XWH	100"	16:9	2214	1250	2280	1600	2402	2330	1683	2383	33	30	320	72	15	74	20
M106UWH	106"	16:9	2350	1320	2410	1670	2532	2460	1753	2512	30	30	320	72	15	74	20
M120UWH2	120"	16:9	2660	1500	2720	1850	2842	2770	1933	2822	30	30	320	84	15	84	20
M120XWH2	120"	16:9	2660	1500	2720	1830	2842	2750	1913	2822	30	30	300	84	15	84	20
M135UWH2	135"	16:9	2990	1680	3050	2010	3172	3080	2107	3152	30	30	300	84	15	84	20
M142UWH2	142"	16:9	3140	1770	3200	2110	3322	3250	2207	3302	30	30	310	84	15	84	20
M150UWH2	150"	16:9	3320	1870	3380	2200	3502	3430	2297	3482	30	30	300	84	15	84	20
M150XWH2	150"	16:9	3320	1870	3380	2200	3502	3430	2297	3482	30	30	300	84	15	84	20
M86UWX	86"	16:10	1850	1160	1910	1390	2032	1960	1473	2012	30	30	200	72	15	74	20
M94UWX	94"	16:10	2020	1270	2080	1500	2202	2130	1583	2182	30	30	200	72	15	74	20
M128UWX	128"	16:10	2760	1720	2820	1950	2935	2850	2090	2916	30	30	200	85	18	85	20
M139UWX	139"	16:10	2990	1870	3050	2100	3165	3080	2240	3145	30	30	200	85	18	85	20
M71XWS1	71"	1:1	1270	1270	1330	1370	1445	1380	1495	1435	30	30	70	74	74	18	20
M85UWS1	85"	1:1	1520	1520	1580	1620	1695	1630	1745	2316	30	30	70	74	74	18	20
M99NWS1	99"	1:1	1780	1780	1850	1885	1965	1900	2010	2677	35	35	70	74	74	18	20
M113NWS1	113"	1:1	2030	2030	2090	2130	2205	2140	2255	3028	30	30	70	74	74	18	20

Note: Data Error may be ±1"

The listed measurements are for general reference only. Please contact Elite Screens to verify product design and dimensions before attempting to integrate its products with any structural or furniture modification. Although a manufacturer may offer product advice, it may be taken or disregarded at the integrator's discretion. Elite Screens will not be held responsible or be otherwise liable for faulty installations.

