



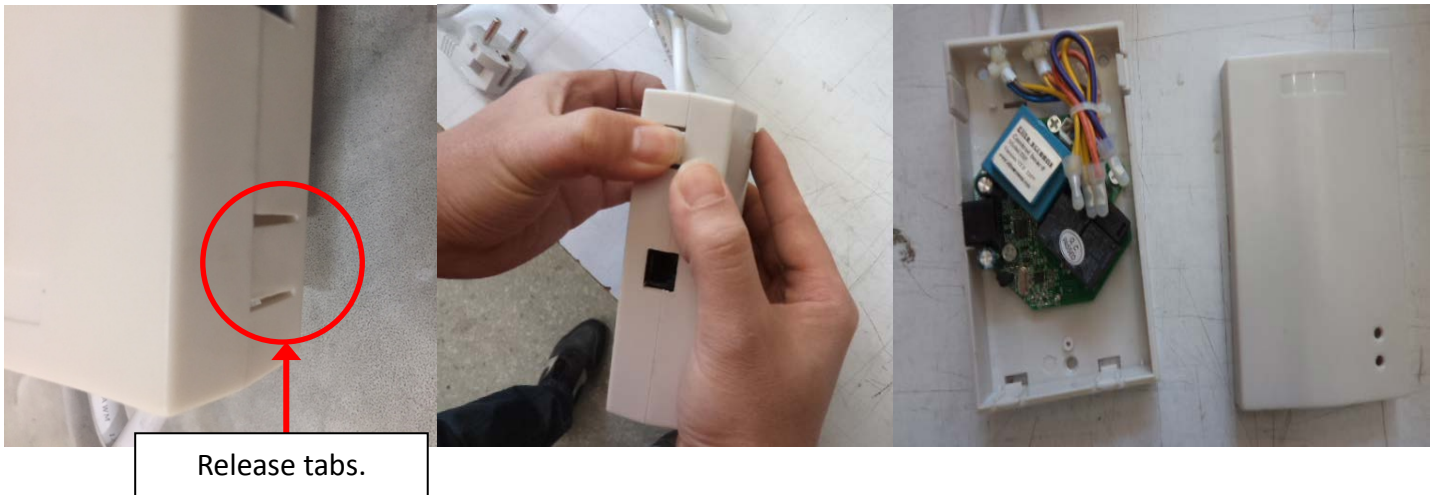
## Circuit Board Replacement Instructions

### for Evanesce/Evanesce B/Evanesce Tab-Tension B Series & ZPM-RT Kit

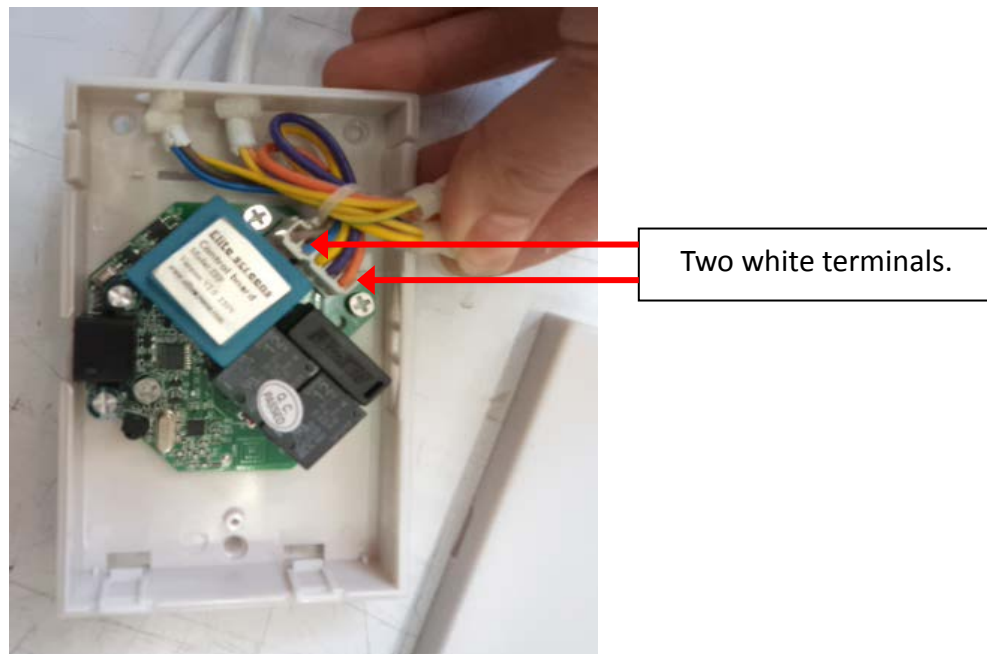
For technical support or further assistance, call 877-511-1211 x604

**ATTENTION:** Please make sure the version number and the Voltage of the circuit board matches the version number and the Voltage of the screen. Elite Screens does not recommend making unnecessary adjustments to the screen, as **improper adjustments will damage** the unit and **void your warranty**.

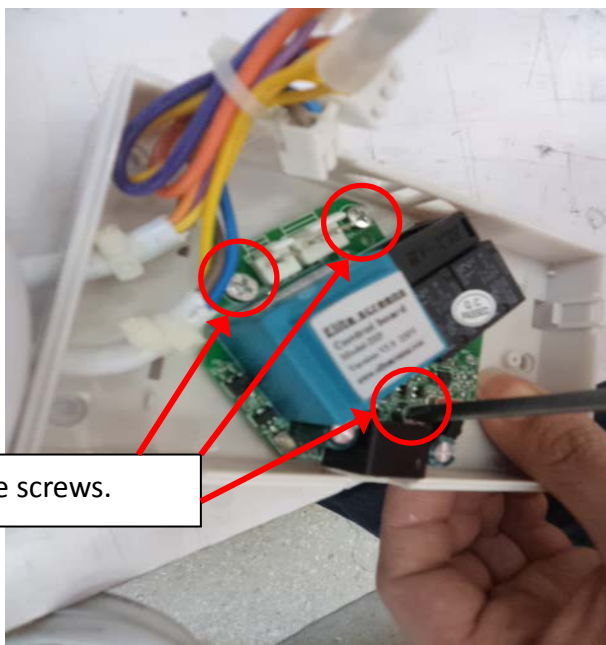
1. Open the control box and remove the cover. Press in the release tabs on both sides and pull to remove.



2. Press in the clips on the white terminals, then carefully pull out to remove the two terminals.

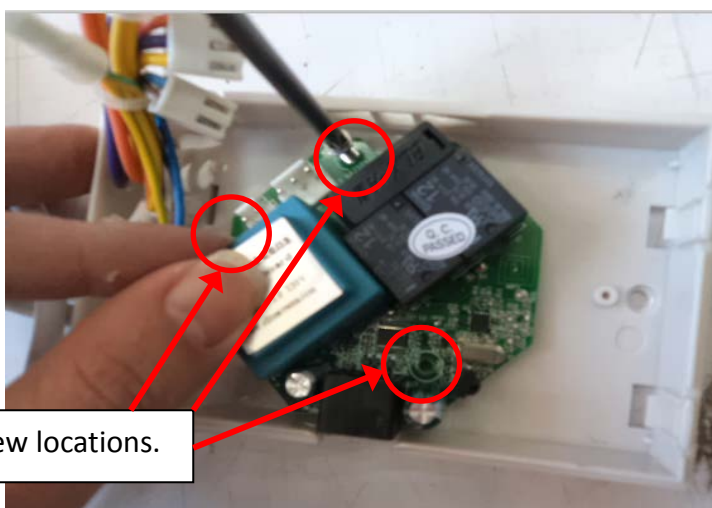


3. Remove the three screws that secure the circuit board with a Phillips head screwdriver. Set the screws aside to later secure the new circuit board.



Finished disassembly.

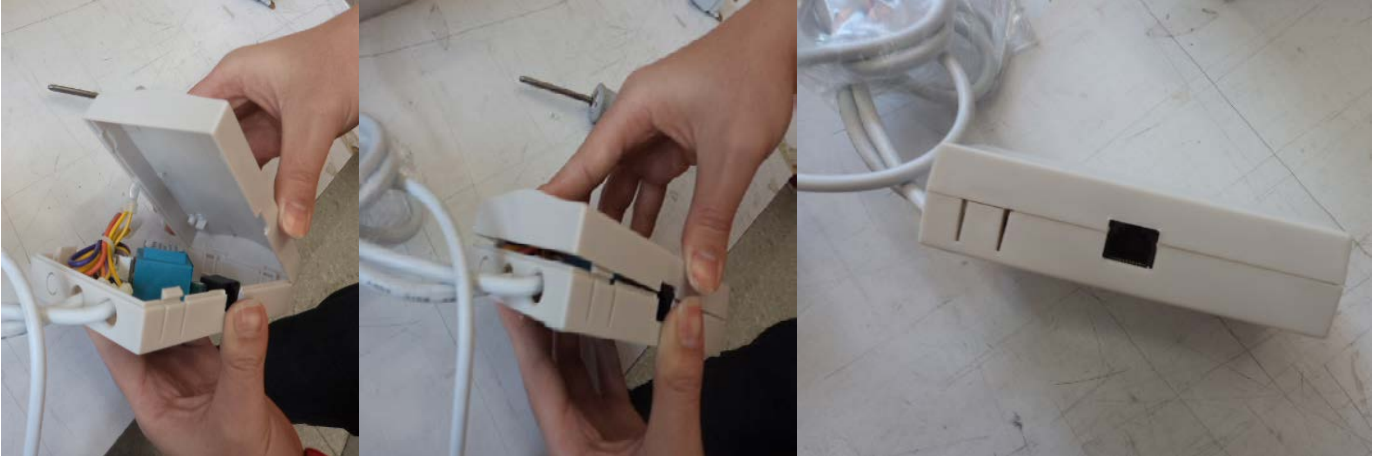
4. Utilize the saved screws to secure the new circuit board in same location of the previous.



5. Insert the two sets of white terminals into the new circuit board.



6. Replace circuit board cover. Be sure to listen for a "click" to insure the cover is secure.



Finished assembly.

**For a local Elite Screens contact or Technical Support, please visit**

**[www.elitescreens.com](http://www.elitescreens.com)**