



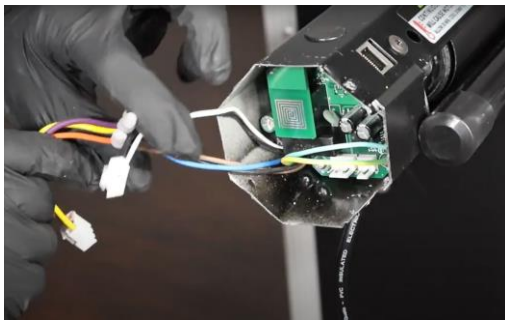
How to Replace SWIFT-RC1™ Circuit Board for Spectrum, Spectrum AcousticPro UHD and VMAX 3 Series

Replacement Process

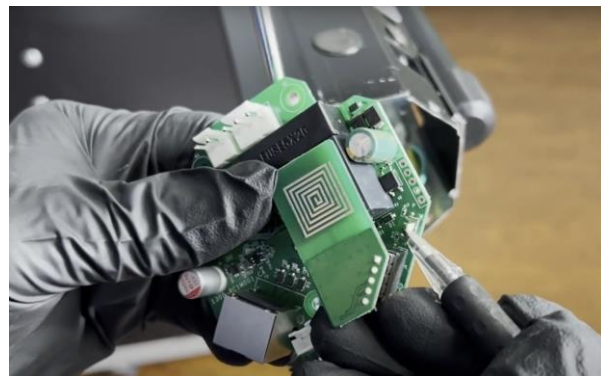
Start by unfastening the screws on the left side of the screen to remove the endcap.



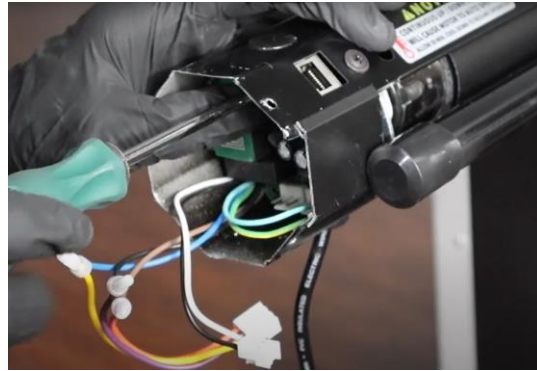
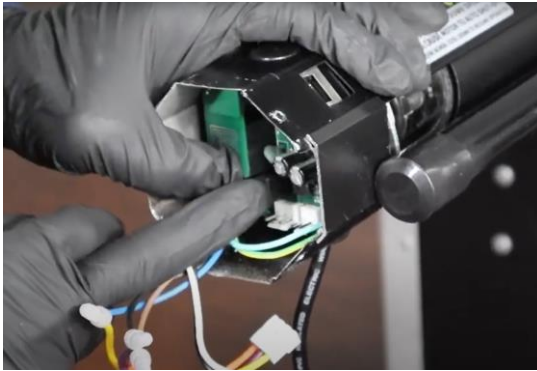
Unplug both connection ports from the circuit board. Then remove the three screws that fasten the circuit board to the housing.



Remove the circuit board and replace with the new one. Next, move the switch to the “right” position for down/up screen type.



Install the new circuit board and secure it to the housing by fastening the three screws.



Plug both connection ports onto the new circuit board. Then, reattach and secure the endcap to the housing by fastening the screws on the side.



The replacement is now complete.

Test the Circuit Board

Plug in the Wall-Box controller and test the up/down/stop functions

The process is now complete

Scan for Video

