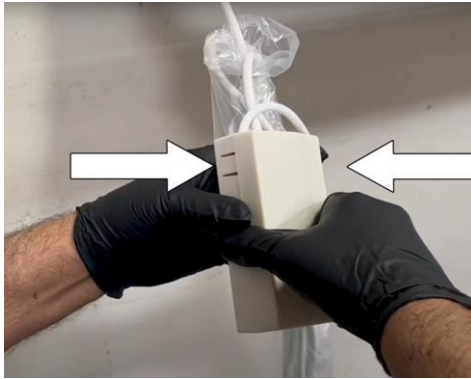




How to Replace the SWIFT-RC1™ Circuit Board for Evanesce/ Evanesce B/ Evanesce Tab-Tension B (CineGrey 5D)/ Evanesce AcousticPro UHD Series In-Ceiling Electric Screens

Replacement Process

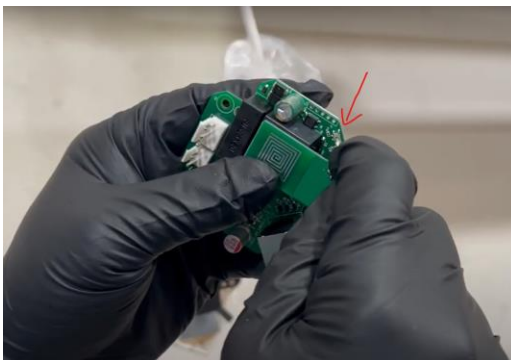
Start by pushing in the top two tabs to pop open the circuit board box.



Unplug both connection ports from the circuit board. Then remove the three screws surrounding it.



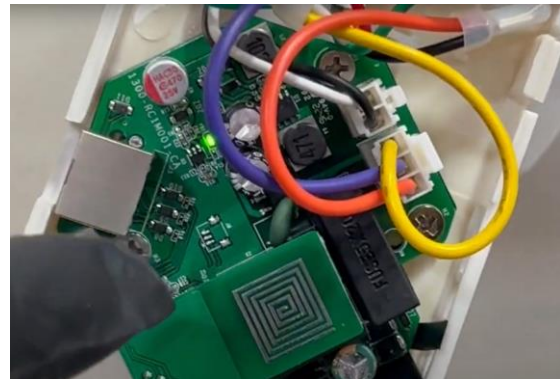
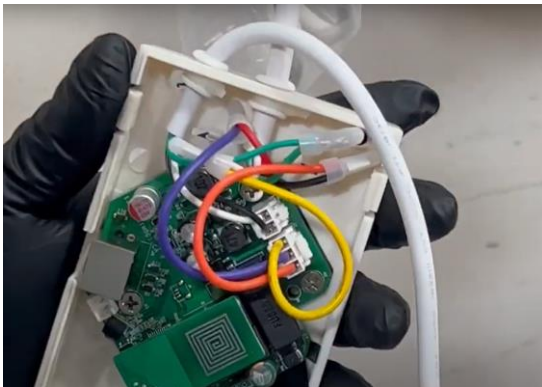
Before installing the new circuit board, move the switch to the “right” position for down/up screen type. Next, align the new circuit board with the back cover.



Install the new circuit board and place back the surrounding screws on it.



Plug both connection ports on the new circuit board. Then, Plug the screen into a power outlet and check that the circuit board lights up



Lastly, snap the cover of the circuit board box back on



Test the Circuit Board

Plug in the Wall-Box controller and test the up/down/stop functions

The process is now complete

Scan for Video

