

## Tubular Motor Replacement Instructions

### For Saker Screens and Outdoor Electric Screens

Preparation: Two people needed for this process

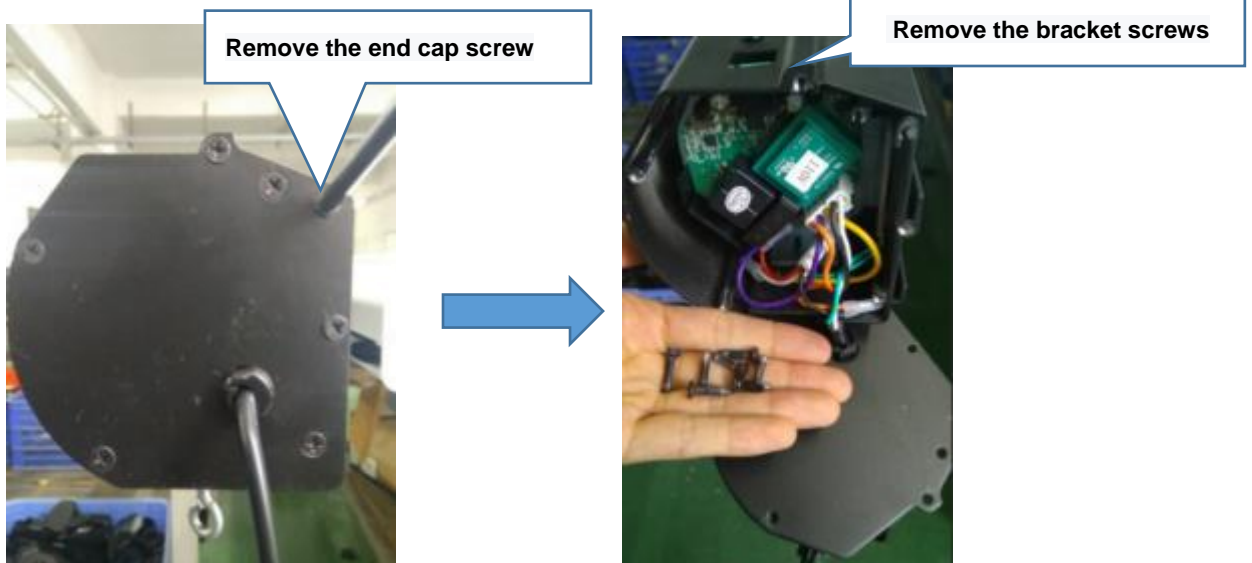
Repair tools: cross screwdriver

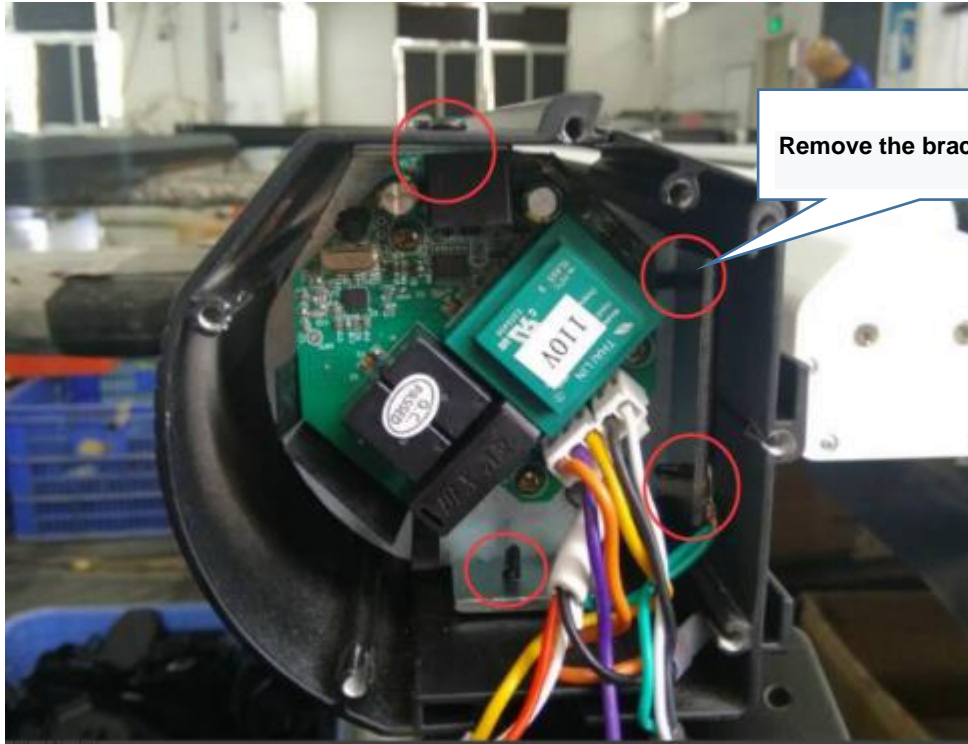


hook

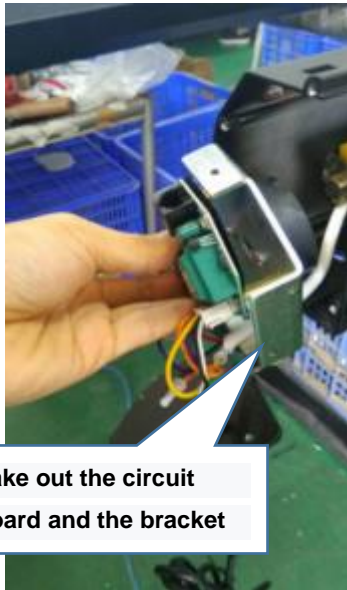


#### A. Take out the original motor





Remove the bracket screws

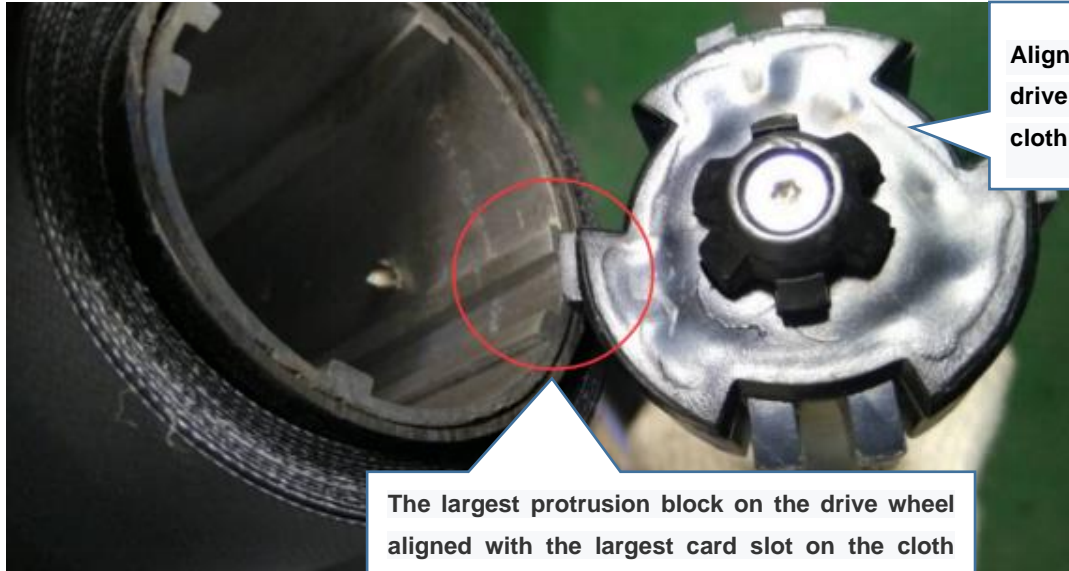


Take out the circuit board and the bracket



Take out the motor

## B. Install new tubular motor



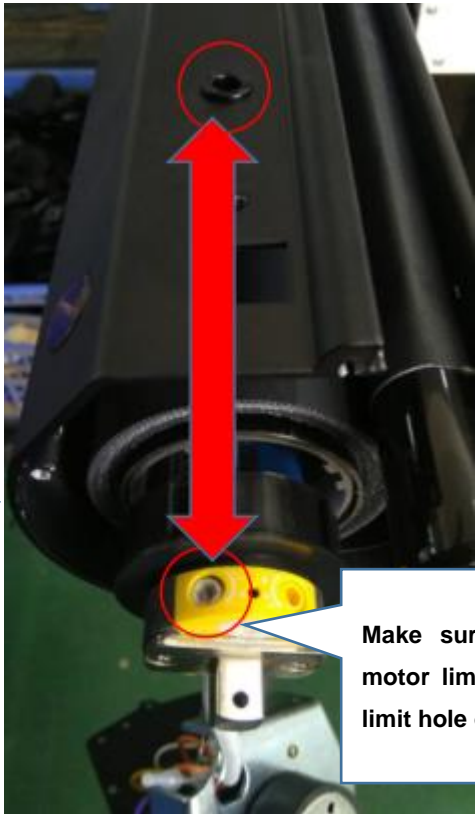
The largest protrusion block on the drive wheel aligned with the largest card slot on the cloth shaft first, which is convenient for determining the installation direction of the entire drive wheel



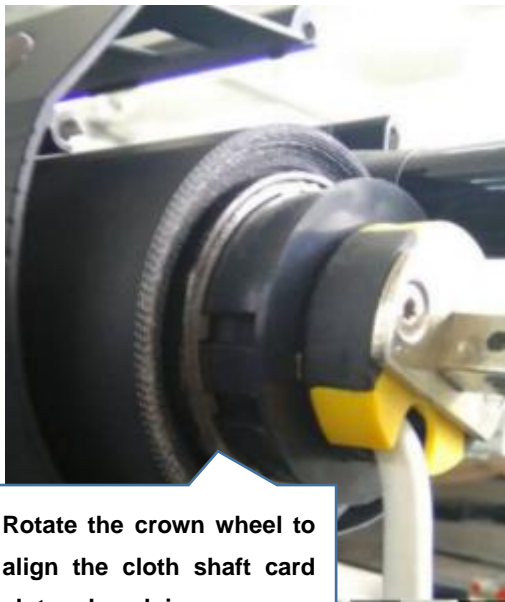
Align the drive wheel with the other slot of the cloth shaft and push it in



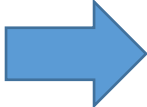
Align the hole of the crown wheel on the motor with the motor bayonet and insert it



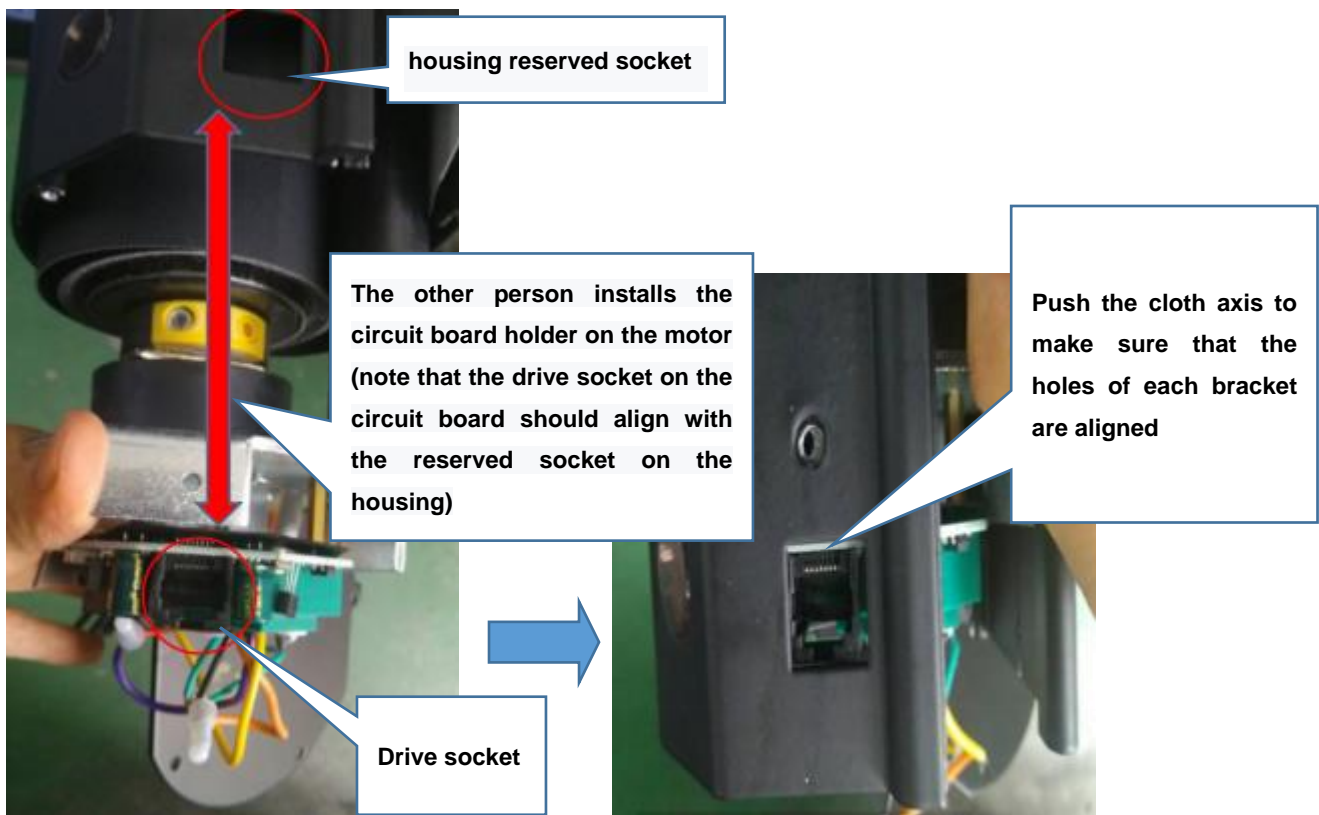
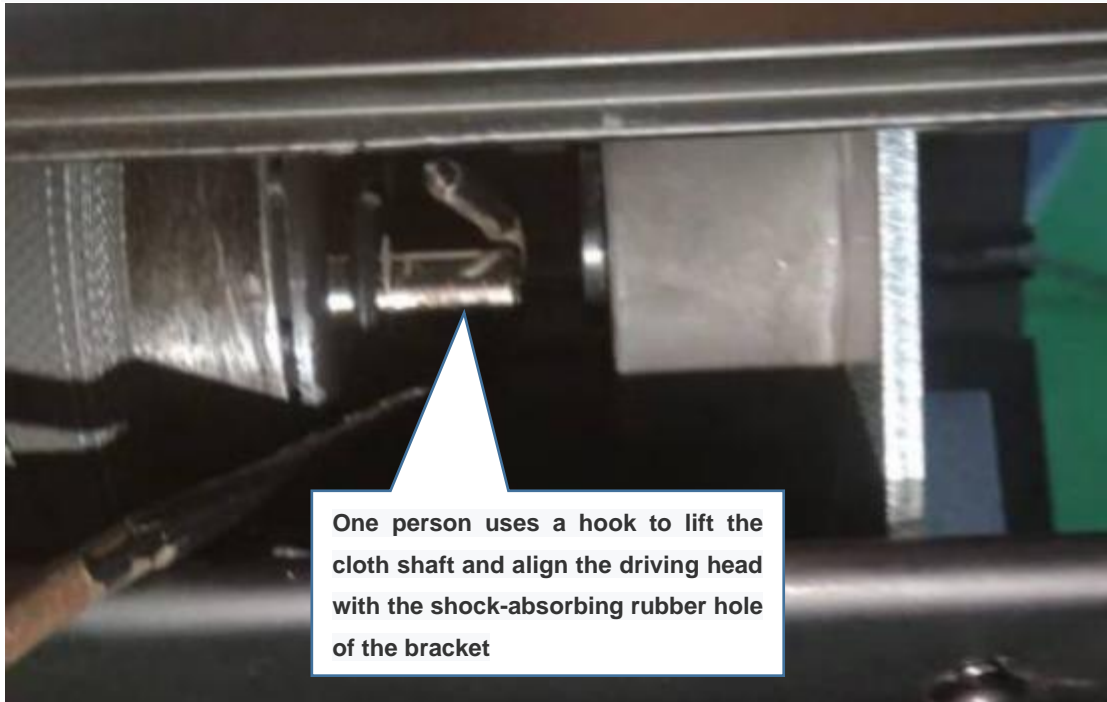
Make sure to align the motor limit hole with the limit hole on the housing

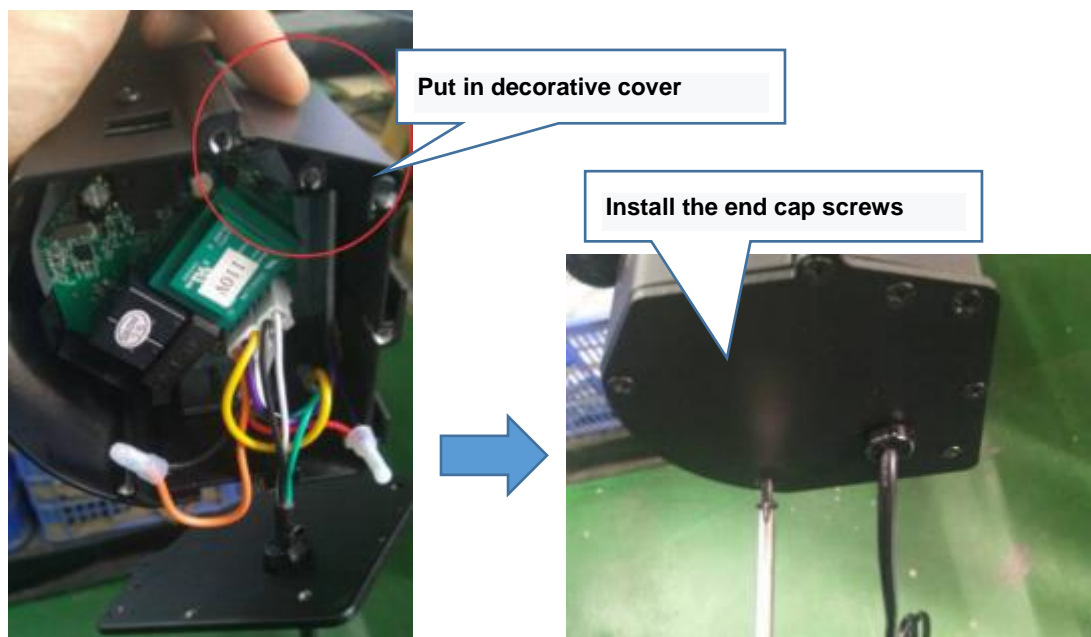
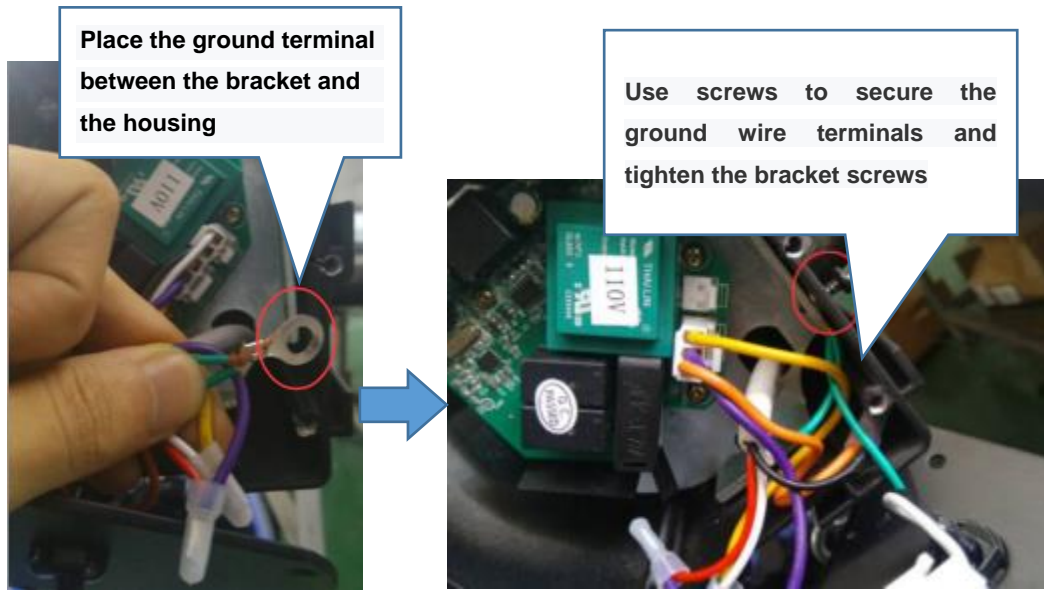


Rotate the crown wheel to align the cloth shaft card slot and push in



### C. Installing the cloth shaft and end cap. (Two people needed for this)





※ **Note: After replacing the motor , you will need to adjust the limit switch.**