

The **Spectrum 2 Series** Electric Projection Screen features a streamlined aluminum casing in a white enamel coating with floating wall/ceiling brackets, designed to allow wood stud installation. It uses Elite's GREENGUARD® Certified **Max-White® FG** screen material that enhances the picture quality with a wide viewing angle. Whether in the office or at home, the **Spectrum 2** is the best non-tensioned projection screen available.

Screen Material

- MaxWhite® FG (fiber-glass backing) 1.1 Gain
- Screen material is flat, durable, easy to clean and mildew resistant
- 180 degree wide-viewing angle for commercial and residential presentations
- 4 side black masking borders enhance contrast ratio and absorbs projector overshoot
- Black backing on material for sharper picture and clarity
- Not compatible with Ultra/Short-throw Projectors
- 4K Ultra HD and Active 3D Ready
- Available in the following range of diagonal sizes:
 - 90"/ 100"/ 110" and 120" in 16:9 format

Design and Installation

- Floating mount brackets allow easy alignment for a wall or ceiling installation
- Streamlined aluminum casing with white enamel coating is moisture resistant
- Suspended ceiling installation capable

- Ships fully assembled with standard 3-prong power connection ready to Plug & Play

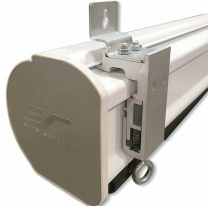
Control System

- 3-way integrated up/stop/down control switch
- Tubular motor allows swift operation with a superior weight tolerance and operational lifespan
- Optional Remote control kit: Wall box w/ RJ45 port, IR/RF remotes, 5-12 volt projector trigger cable, Wireless 5-12 volt Mono projector trigger cable, IR "eye" extension (Part# ZPM-RT)

Quality & Reliability

- Flame Retardant: Complies with NFPA 701 Standards
- GREENGUARD® Indoor Air Quality and GREENGUARD® Children & Schools Certified
- 2-year warranty from defects in workmanship
- 3-year warranty offered through ENR-G program (Education, Non-profit, Religious, and Government/Military)

SUSPENDED
CEILING
INSTALLATION
BRACKET



OPTIONAL REMOTE CONTROL KIT
FOR WIRELESS OPERATION



FLUSH WALL/
CEILING
INSTALLATION
BRACKET