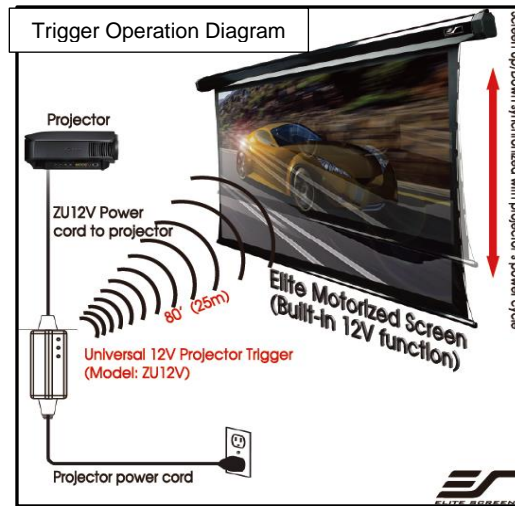
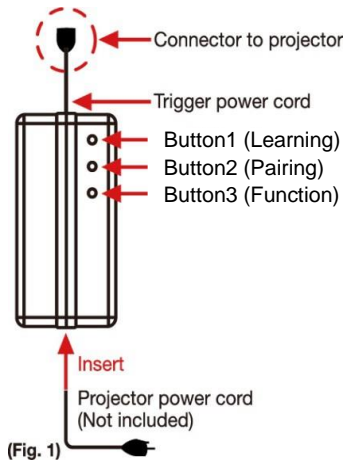


1. Product

(1) Product introduction: The ZU12V1 is a wireless 5-12 volt trigger for projectors that don't have a dedicated trigger port. It is compatible only with Elite motorized screens with the RC1 control system to drop/rise or rise/drop automatically using the projector's power cycle. It connects to the projector's power port to send a radio frequency signal to the Elite motorized screen.

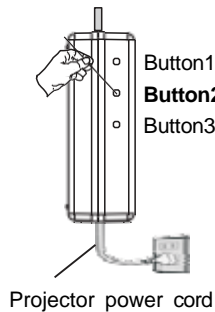
(2) Schematic diagram of the trigger:



2. Instructions

Before starting the process, unplug the Elite motorized screen and projector from the power supply. Then, unplug the power cord of the projector and connect it to the trigger, then work on the code pairing.

①

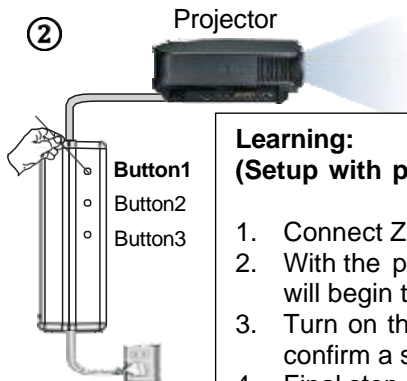


Code learning: (Pairing with screen)

1. Plug in the power cord of the projector to the power supply.
2. Plug your projector screen to the power supply
3. Plug in Wall Box to the Screen's RJ50, then press and hold the "Program" key + "UP" key on wall box to enter the learning mode. Red light will begin to blink.
4. Press and hold the ZU12V1 Button 2 (Pairing) for 3 seconds. The red light on the wall box will disappear confirming that the code learning is successful.

Note: After using ZU12V1 to learn the code, the RF code on the back of the RF remote control must be adjusted to "000" mode and then can continue using it.

②



Learning: (Setup with projector)

1. Connect ZU12V1 to the projector.
2. With the projector power off, press and hold Button 1 (Learning) for 3 seconds. A faint red light will begin to flash.
3. Turn on the projector, and the light will stop blinking and stay on. The screen will deploy to confirm a successful pairing.
4. Final step, turn off the projector, and the red light will turn off.

Reverse direction: (Additional feature)

Press Button 3 (Function) twice, then hold for 10 seconds. The green light will flash to complete the reverse direction.

Note: After adjusting the reversing function, it will affect the direction of the projector's on/off action on the screen. Currently, this feature is only available for Kestrel series products now.

- ※ The effective control range of the trigger is within 25 meters.
- ※ ZU12V1 trigger can only be used for Elite Screens motorized screens with RC1 control system.

**For more information, technical support or your local Elite Screens contact,
please visit www.elitescreens.com**