



GolfSim DIY Screen Series

ImpactWhite™ 1145 Golf Simulation Front Projection Screen Material

User's Guide – M Type

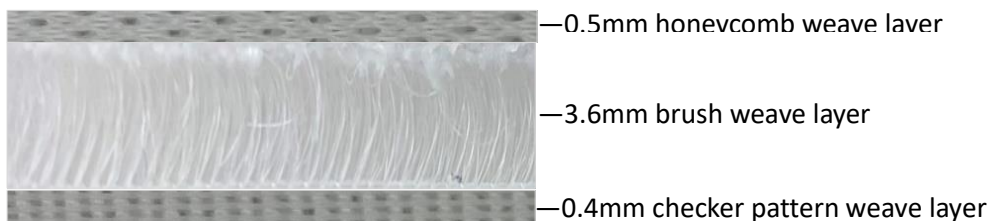
Product Description: The *GolfSim DIY Screen Series* is a Do-it-Yourself impact golf screen that utilizes our three-layer ImpactWhite™ 1145. It includes grommet holes to allow for installation on custom frames for golf enclosures. It can also be used for a variety of Sports Simulation applications.

Installation Tips and Precautions

1. Handle with caution, material is subject to static electricity.
2. Wear gloves and unroll the material on a clean surface.
3. Make sure to use the correct side. The ImpactWhite™ 1145 screen has a front and back side.
- 4. Folding lines/wrinkles are normal due to the nature of the material structure and packaging.**
5. Avoid installing/hanging the screen where the ball can strike the grommets directly to prevent damaging the edges.
6. Make sure to allow proper distance for swing range to protect children, pets, ceilings, walls, windows, or any other property.

Material Features/Specs

- Composed of 100% polyester - Non-absorbent material that is hard to mold
- Warp knitted fabric with 11.5 c.p.c. (course per cm) - High strength, difficult to break
- Withstands golf shots up to 200 mph
- 4.5mm thick 3-layer knitted structure provides excellent shock absorption
- The internal space suppresses the noise generated when the golf ball impacts the screen



ImpactWhite™ 1145 Specifications	
Color	White
Thickness	4.5±1mm
Material composition	100% Polyester
Weight	460 g /m ²
Width	3100mm
Effective Width	3048mm
Gain	0.8
Viewing Angle	180°

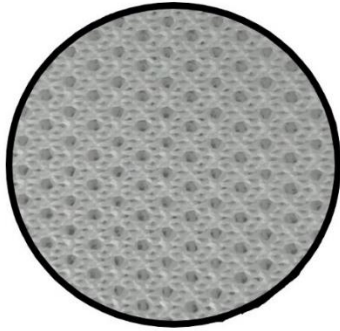
Standard Sizes Available

Model Number	DIY10X8-IPW1145	DIY10X10-IPW1145	DIY10X13-IPW1145	DIY10X20-IPW1145	
Size	Width	10 ft (3048 mm)	10 ft (3048 mm)	10 ft (3048 mm)	10ft (3048 mm)
	Length	8ft (2450 mm)	9.8 ft (3000 mm)	13.1 ft (4000 mm)	19.6 ft (6000 mm)

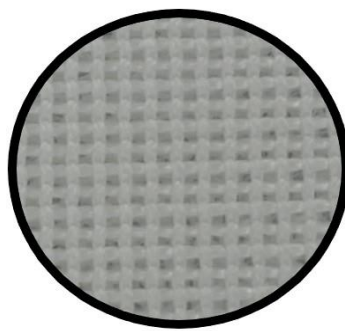
Front and Rear Side

The interior of the roll with honeycomb weave pattern is the FRONT projection side, and the exterior with the checker weave pattern is the back side.

Front Side (Projection/Impact)



Back Side



Maintenance

- Use a dry microfiber cloth to remove dust from the screen surface.
- When cleaning, use a microfiber cloth dampened with warm water to remove any traces.
- Use hot steam to wet the material, then wipe dry with clean microfiber.
- Do NOT rub or apply pressure when cleaning the surface.
- Do NOT use any solutions, chemicals, or abrasive cleaners onto the screen surface.

To avoid damage to the screen, please avoid touching the screen directly with your fingers, pens/pencils or any other sharp or abrasive objects.

Example of DIY10X10-IPW1145 Installed in a Golf Simulator enclosure



For Technical Support or an Elite Screens contact in your area,

visit www.elitecreens.com