



Lights-ON Portable CLR® 5 Series

Portable Ceiling Light Rejecting Projector Screen

For tabletop/bottom mounted ultra-short throw projectors

User's Guide – V1.0

Visit www.elitescreens.com for latest updated version.

Thank you for choosing the **Lights-On Portable Series®**, LPS CLR® 5 projection screen! Please read through this user guide before utilizing the screen. Correct usage and maintenance will ensure a long product life.

Care & Use Instructions

The CLR® 5 is a Ceiling/Ambient light rejecting screen front projection surface. It is a delicate optical/lenticular material and should not be folded, bent, or creased. Always maintain screen material flat and taut during setup and disassembly.

****Elite Screens is not responsible for damages due to negligence resulting from misuse or mishandling of the product and will void your warranty.***

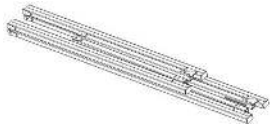



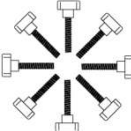

Dust, dirt and scratches on the projection screen surface will affect the quality and performance of the projection image. Follow the instructions below to properly maintain the screen.

- 1) The screen surface has a horizontal linear structure. DO NOT wipe the screen up and down or in a circular motion. ***Wipe gently from left to right only.***
 - 2) Clean the dust on the screen surface with a soft brush or microfiber cloth. A rough/coarse towel or cloth may damage the screen's surface.
 - 3) Gently wipe the screen with a lightly moistened white lint free cloth with water or with a neutral detergent (1mL/0.33 oz) mixed with water (1000 mL/33.8 oz).
 - 4) Avoid putting pressure on the screen material when wiping the screen. If dust or other debris is on the surface, we recommend using an air sprayer to blow them away. After using the screen, disassemble it and store it in the carrying bag provided. ***Keep the screen material protective film and tube for future screen disassembly***
- ◆ To avoid damage and injury, the screen should only be operated by adults.

Notes: The following precautions should always be taken to avoid damaging the material which is not covered under warranty.

- Don't touch the screen material to avoid leaving fingerprints.
- Use gloves when handling the material.
- Don't scratch the material, as it will leave permanent markings on the screen's surface.
- Don't point to the screen material with a fingertip or other sharp objects to prevent damage to the material.
- Don't use acetone, benzene, alcohol, and any other organic solvents to clean the screen material. Using such chemicals will permanently damage the screen

Hardware and Parts list

A: Folding frame x1 	B: Left and right folding legs x2 	C: Screen material bag x1 
D: Edge Trim x 4 	E: M8 Knob screws x 8 	F: Drape Skirt x 1 

Note: Before assembling the screen, make sure all the above components are included.

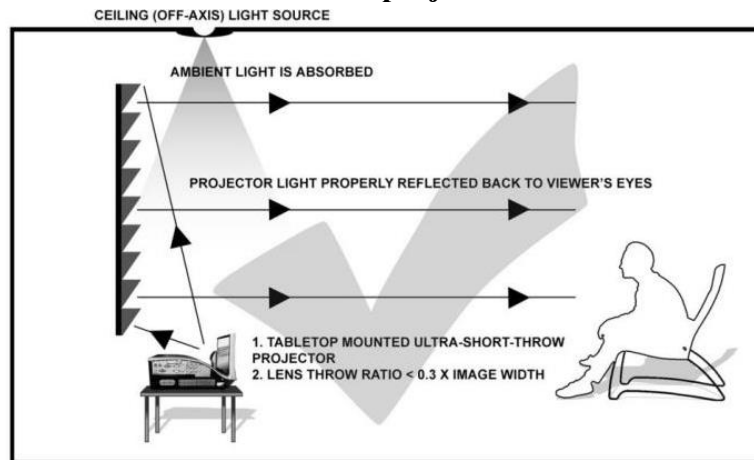
Notice to Installer:

Proper Projector Placement for StarBright CLR® 5

The StarBright CLR® 5 is exclusively for bottom placed ultra-short throw projectors as illustrated below.

PROPER PROJECTOR PLACEMENT

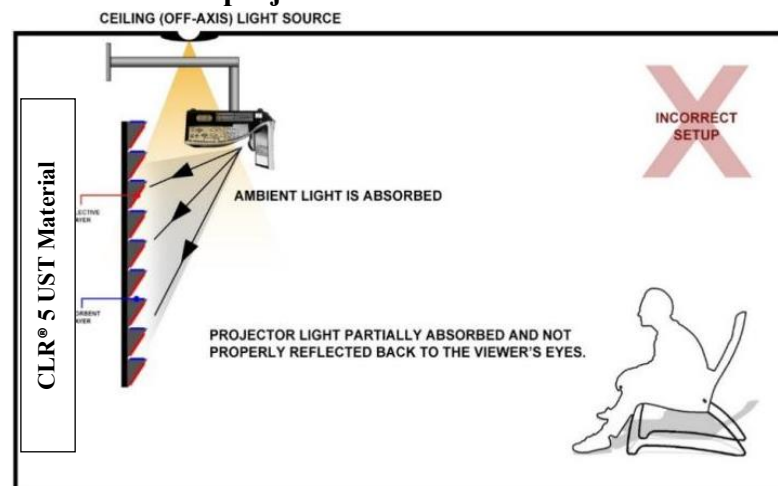
1) Tabletop (bottom) mounted ultra-short throw projector illustration



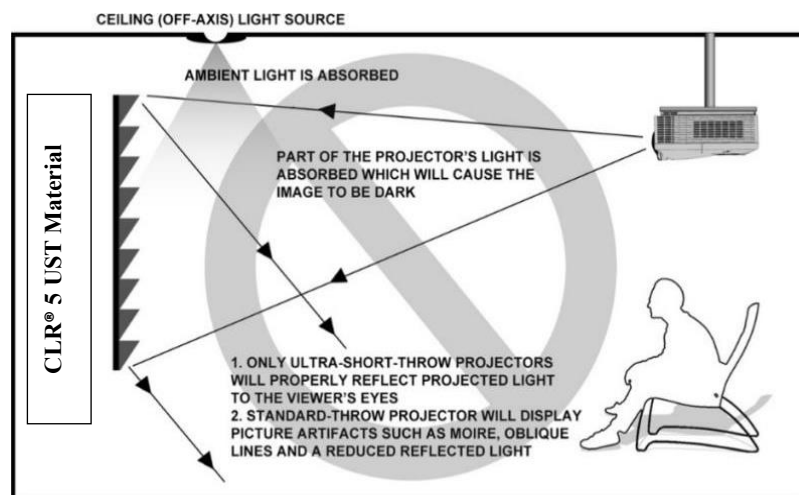
IMPROPER PROJECTOR PLACEMENT

Overhead placement or a standard projector will make the image very dark, on account of the screen's absorbent layer deflecting light that is not aligned with its reflective angle.

1) Ceiling mounted ultra-short throw projector illustration



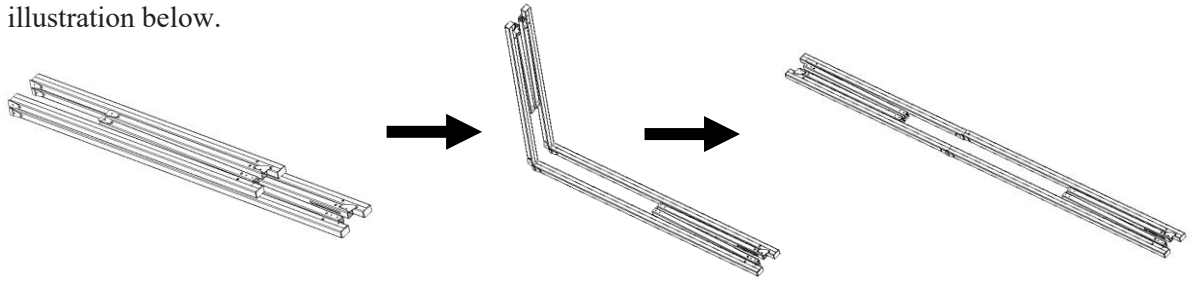
2) Ceiling Mounted Short and Standard-Throw Projector Illustration



Images are not up to scale and are for illustrations purposes only.

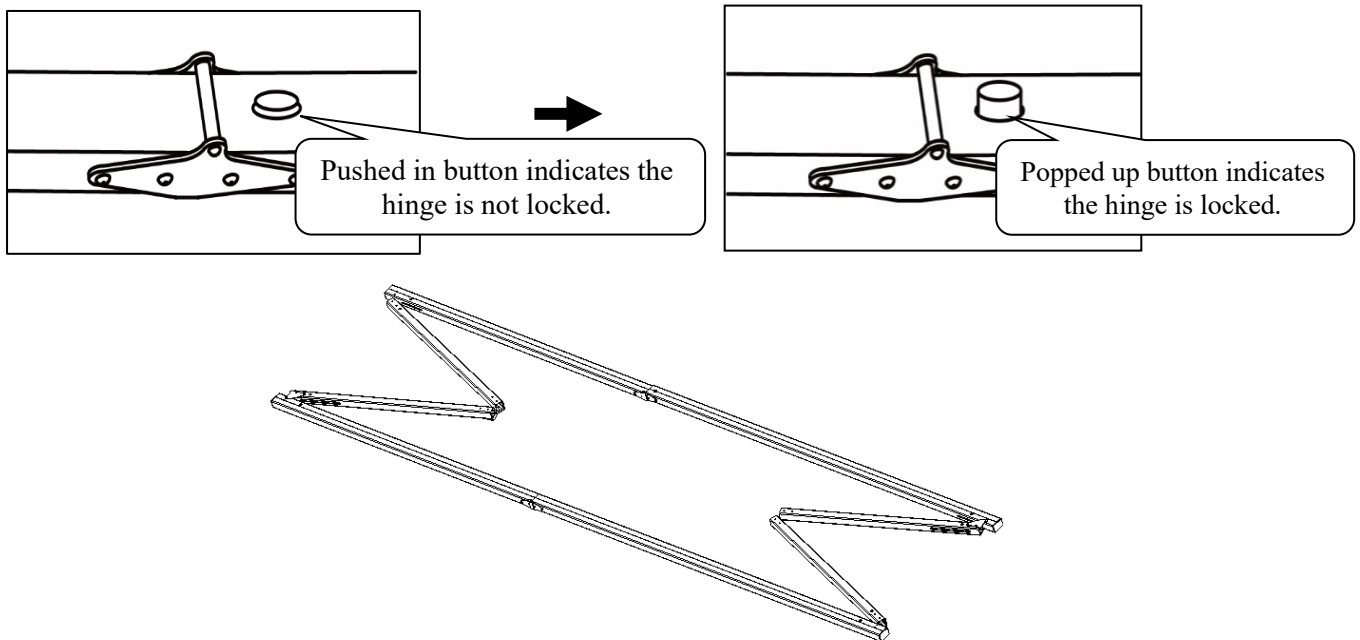
Frame Assembly and Screen Material Attachment

1. Take the **folding frame (A)** out of the carrying bag and place it on a flat surface. Unfold the longer sections first as shown in the illustration below.



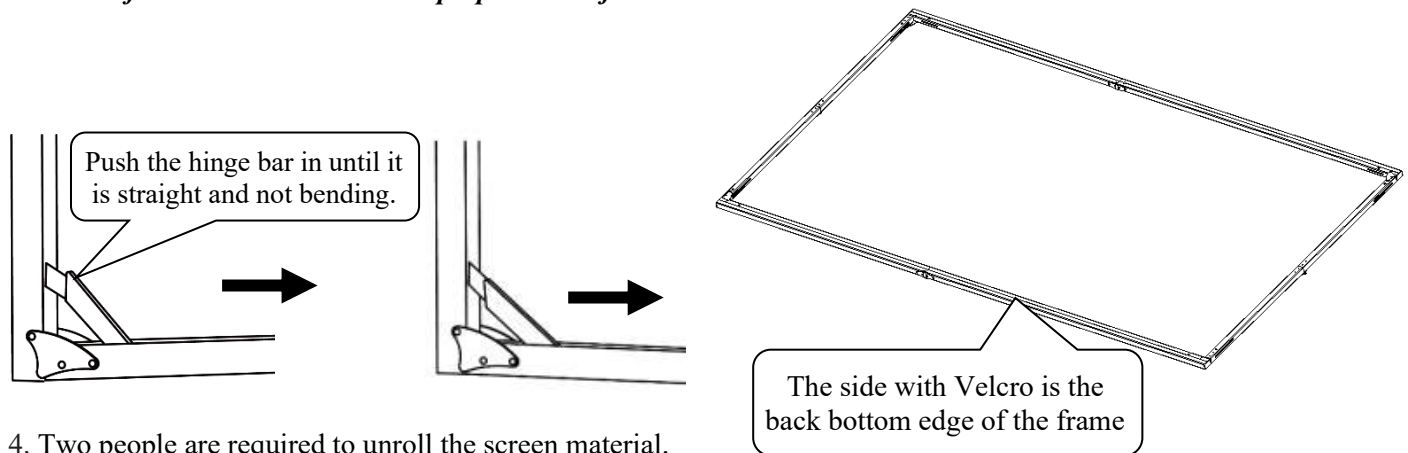
2. Unfold the frame until the latch on the hinge “clicks” into place. Repeat the procedure for the shorter sections.

TIP: Gently lift the frame to ensure the hinge is locked (button pops up).

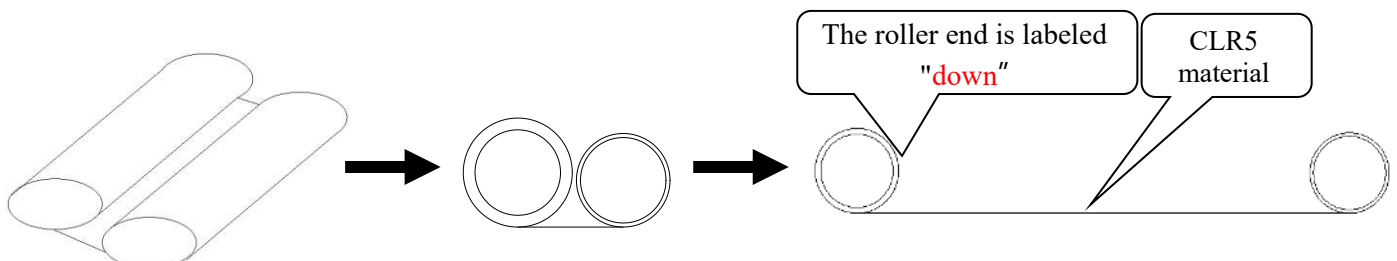


3. Verify that all four (4) corners of the frame are at 90° angles and the hinged support bar is straight and not bending. The side with Velcro is the back bottom edge of the frame.

Place the frame on a clean cloth in preparation of screen material installation.



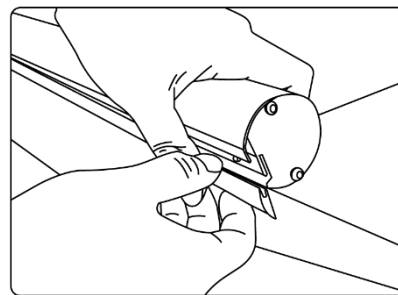
4. Two people are required to unroll the screen material.



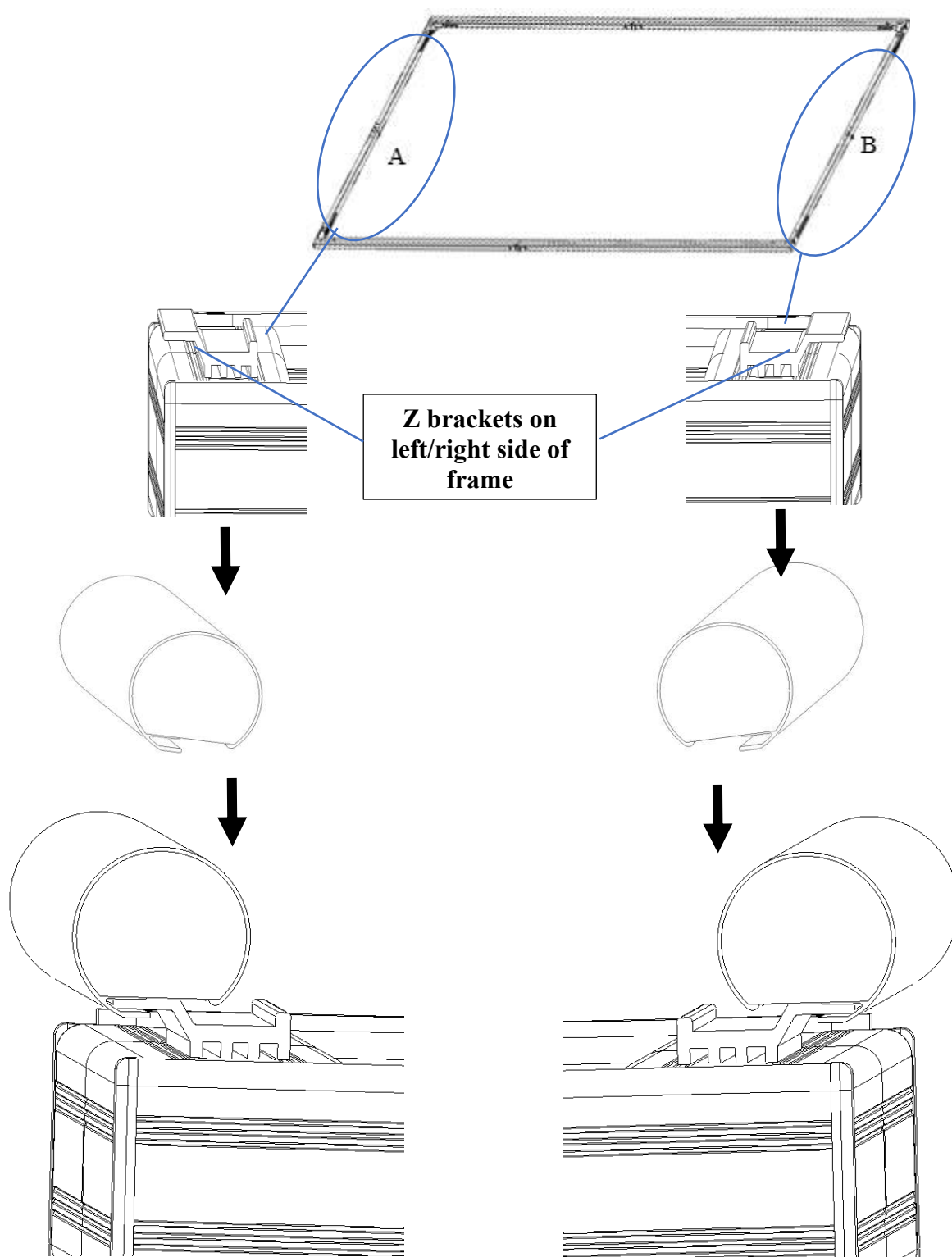
5. The screen material unrolls from one side. One person unrolls one end of the screen material while the other holds the other end.

Remove the plastic cover from the roller.

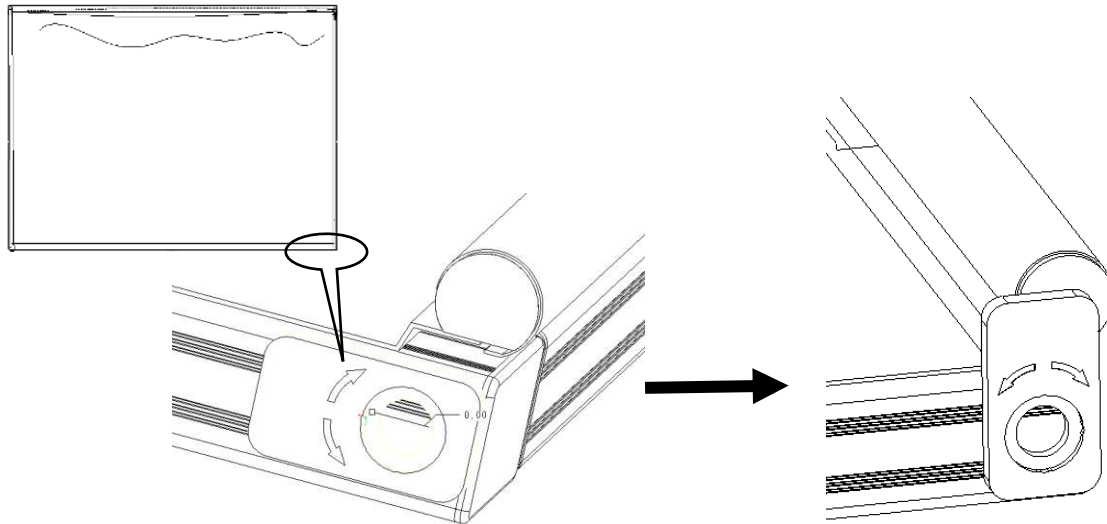
Do NOT discard the plastic cover. It is required to prevent imprints on the projection surface when the screen is rolled back.



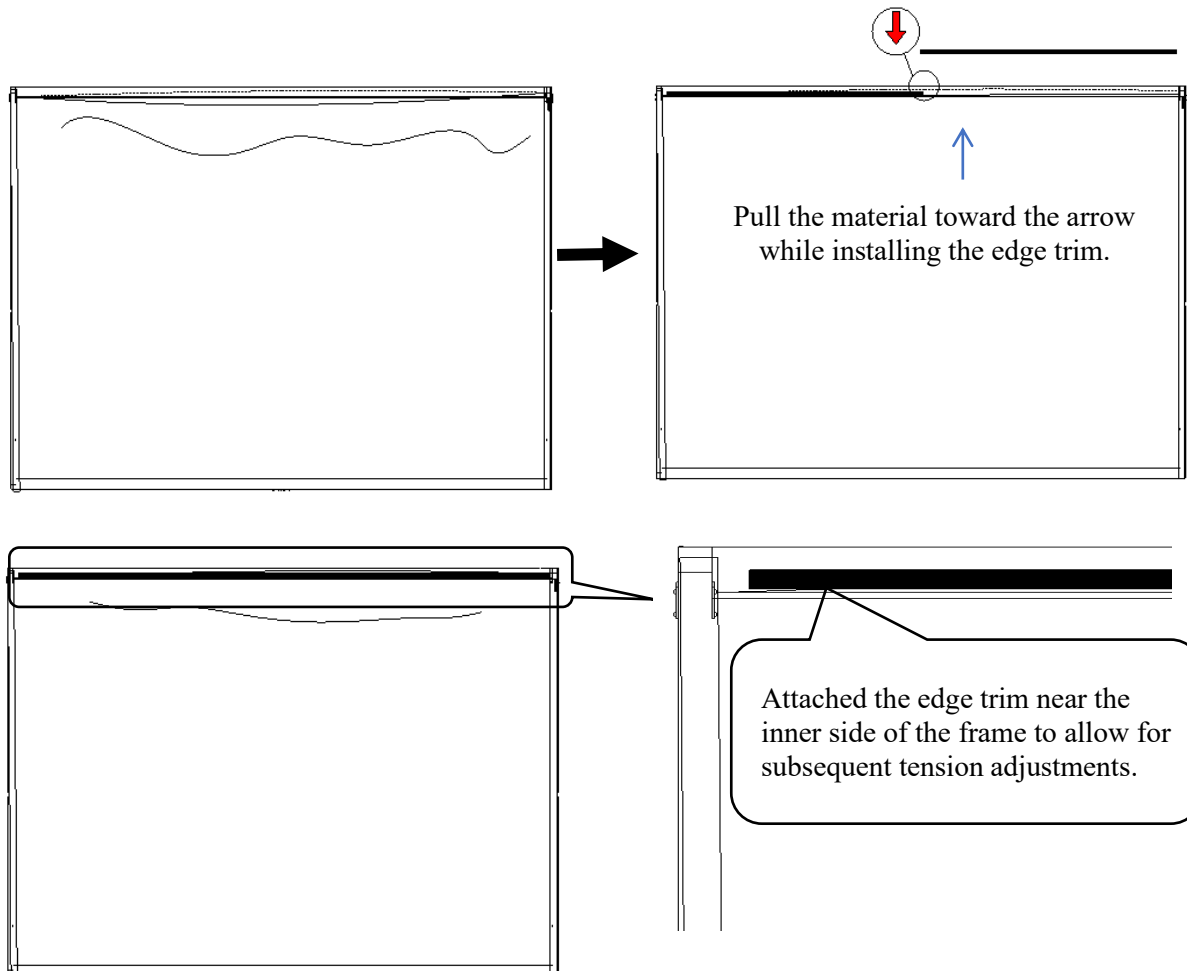
Next, fasten the roller onto the frame's Z-brackets in the A-B sequence



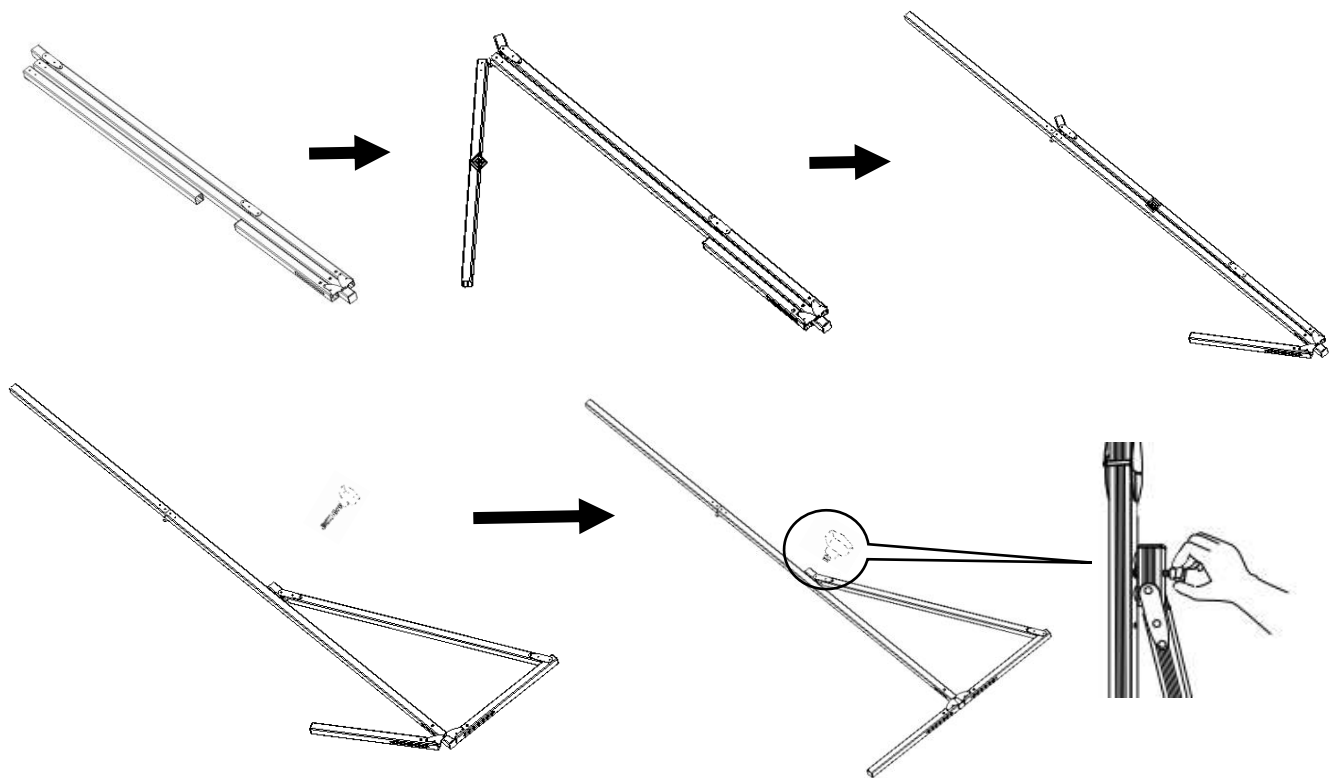
6. Once the screen material is attached and secured on both sides, turn the roller base at the bottom 90° to lock it in place and prevent downward movement.



7. After installation, minor waves may appear on the screen. One person should tension the material while another aligns the edge trim with the red center arrow and secures it.

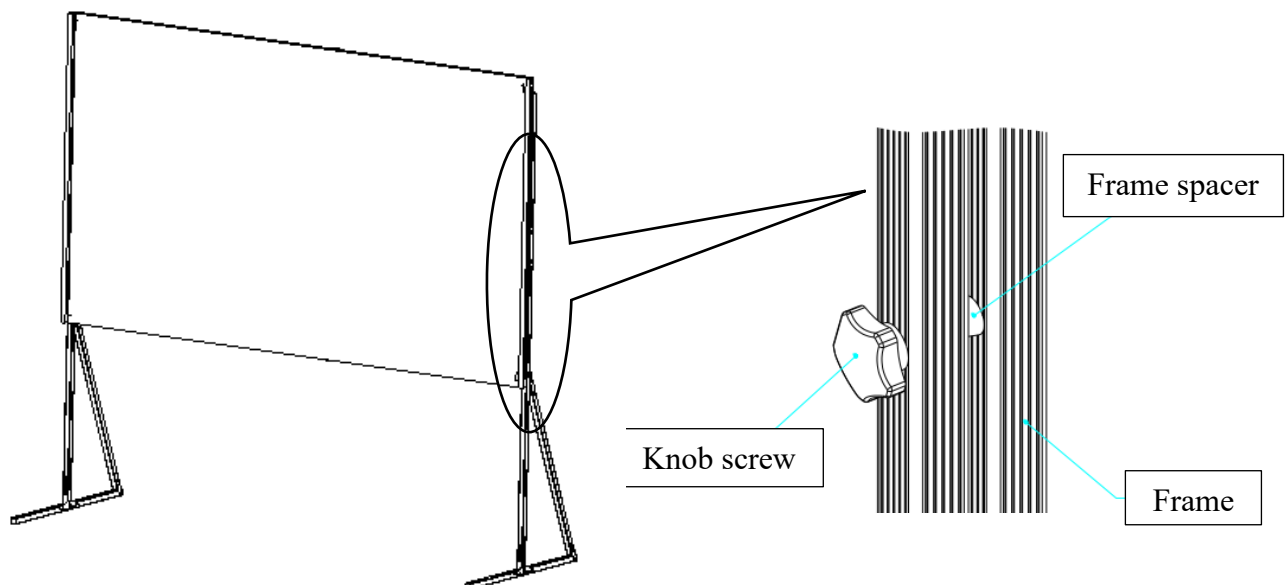


8. Open the support legs in the sequence indicated by the arrows as shown below.

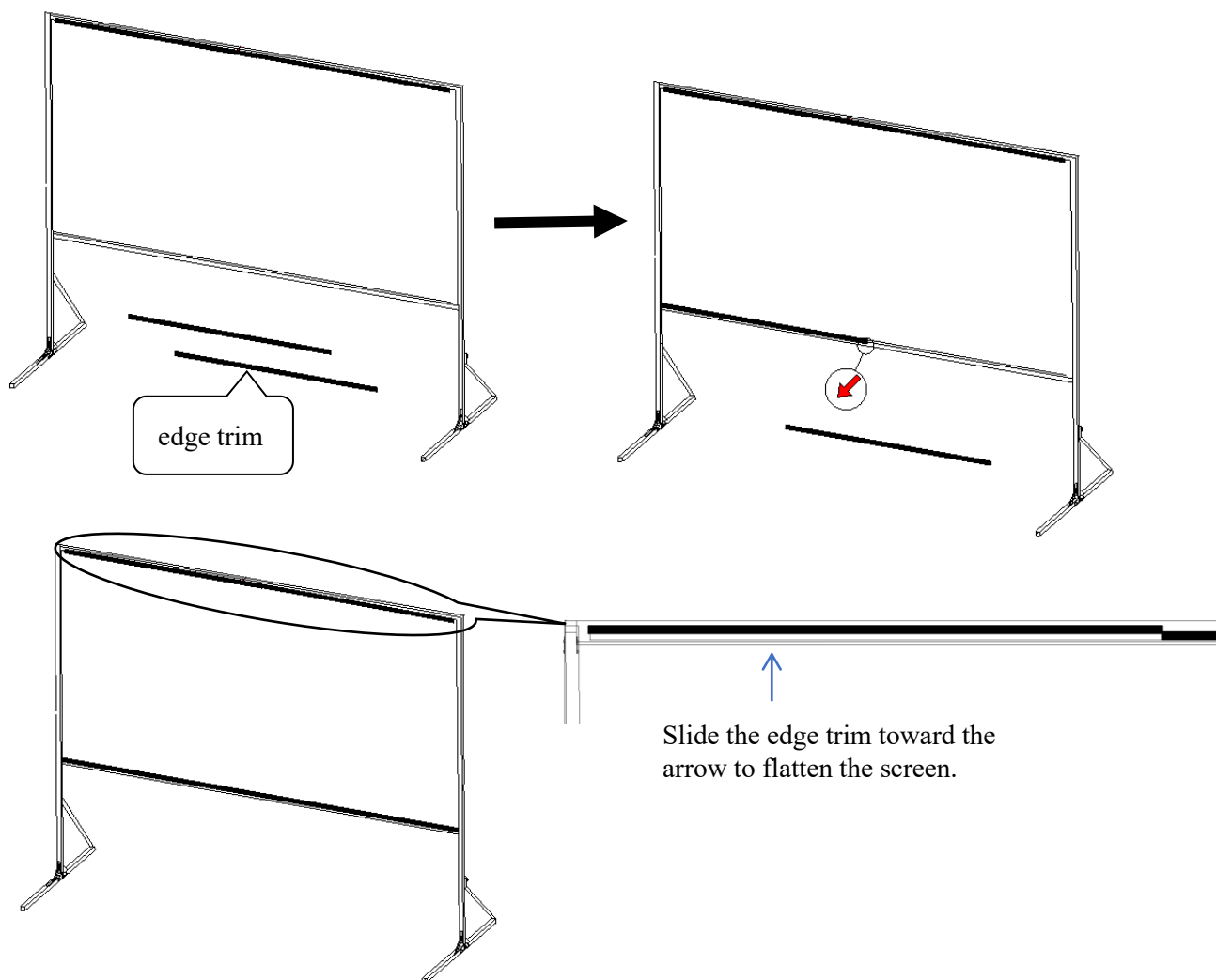


9. Attaching the Support Legs to the Frame

1. Always use at least two **knob screws (e)** through the T-Leg Support, the Spacer and into the Frame on each side.
2. Height can be adjusted in 6" increments up or down. Normal screen height is 44" from the bottom of the frame to the floor.

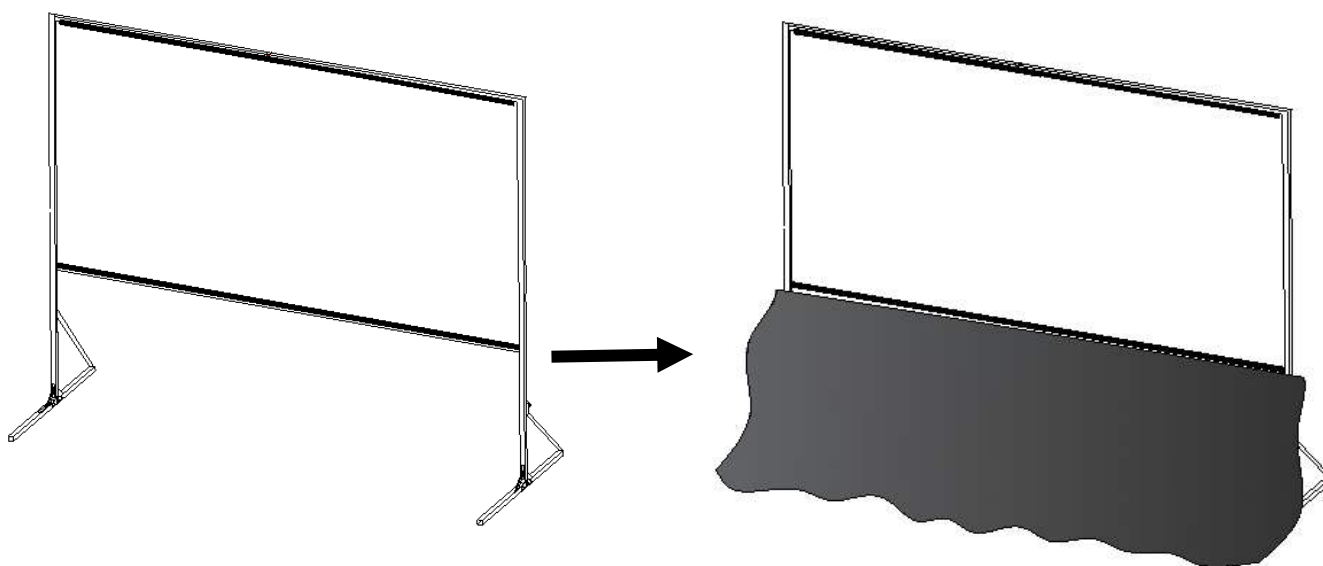


10. After securing the support legs, install the bottom edge trim; adjust both the top and bottom edge trims to ensure the screen is flat.



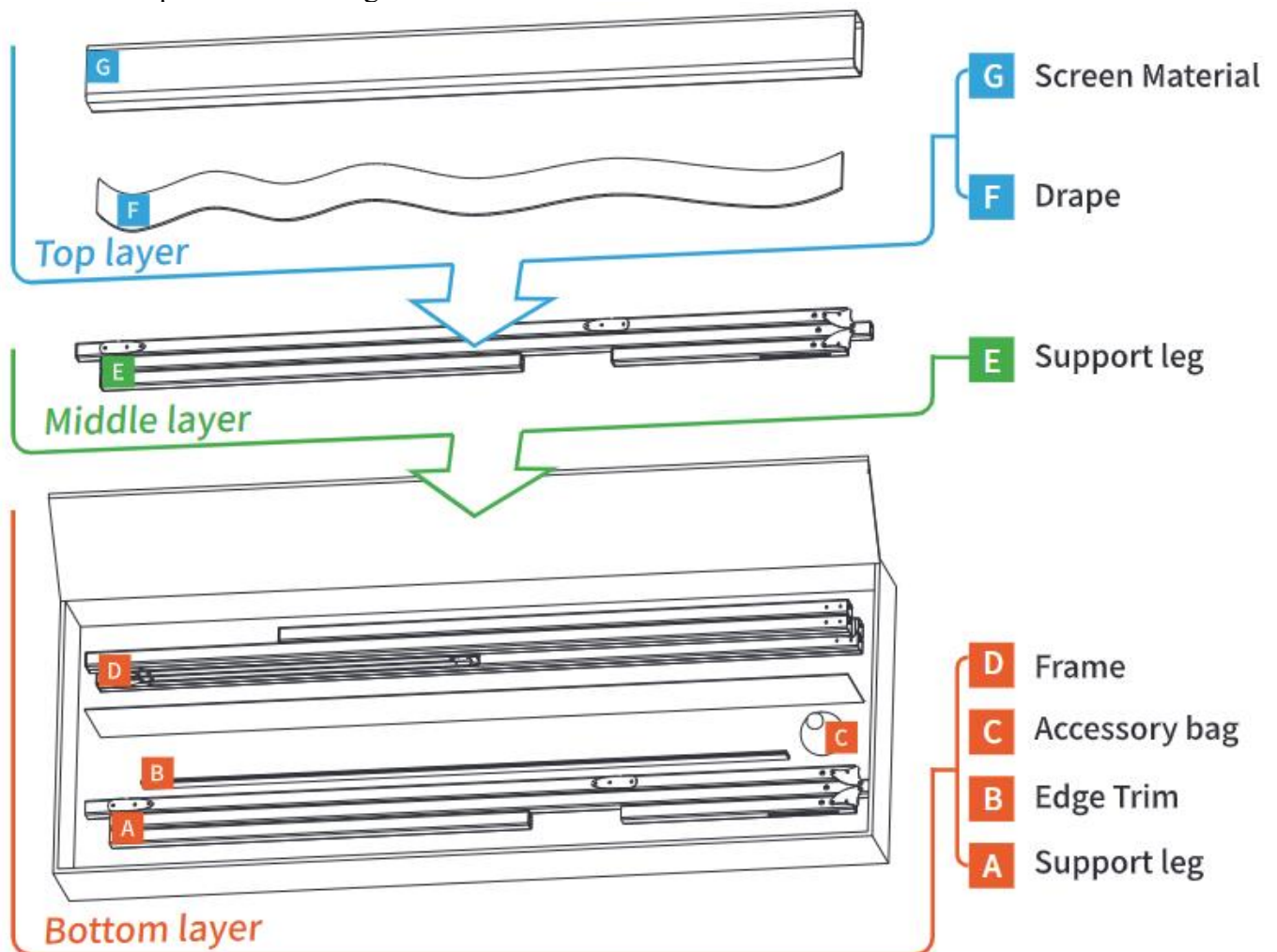
Drape skirt installation

11. Align and attach the drape skirt's top Velcro strip to the back of the bottom frame.



Disassemble and repack in the bag

Reverse this process to dismantle and pack away the screen. And refer to the illustration below to properly place the components in the bag.



For local Elite Screens contact or Technical Support, please visit
www.elitescreens.com