



# Insta-DE 2 Series

## Dry-Erase Front Projection Screen Film

### User's Guide

Thank you for choosing the Insta-DE2 Series dry-erase whiteboard projection screen! Please read through this user guide before utilizing the screen. Correct usage and maintenance will ensure a long product life.

#### **Precautionary Notes:**

Before using the dry-erase function of your whiteboard screen, please make note of the following instructions to properly maintain and clean your dry-erase surface projection screen. (These Whiteboard cleaning tips are just as relevant with any dry-erase writing surface as they are with our Whiteboard-Projection Screens.)

1. Only use a high density foam eraser when removing dry-erase markings from the Whiteboard screen.
2. Do not use abrasive erasers as these may scratch the surface of the screen.
3. Never spray the whiteboard cleaner solution onto the surface while marker writing is present and then attempt to use a high density foam eraser to remove. This will only smear the dry-erase marker ink making the surface more difficult to clean and will likely ruin the foam eraser.
4. If there are any dry-erase markings left behind even after attempting to remove them using our high density erasers, spray our whiteboard cleaning solution directly onto the screen surface and use only a soft microfiber cloth to wipe-down and clean the area.

For a video demonstration, please visit: <http://www.elitescreens.com/whiteboardscreen-cleaning>

If replacement cleaning accessories are needed, please visit the Whiteboard cleaning accessories section of our website at <http://www.elitescreens.com/clean-whiteboard>

#### **Product Features**

- Award winning and GREENGUARD certified VersaWhite material.
- 1.1 gain with 180-degree wide viewing angle.
- Special anti-scratch layer to ensure long use as a dry-erase/projection screen.



#### **Application Advantages**

- Instantly converts flat surfaces/walls into a dry-erase whiteboard projection screen.
- Includes adhesive black velveteen border to enhance contrast and overall appearance.
- Perfect dry-erase and projection solution for today's short throw projectors.
- Ideal and effective instructional presentation tool in the classroom, boardroom, and training facilities.

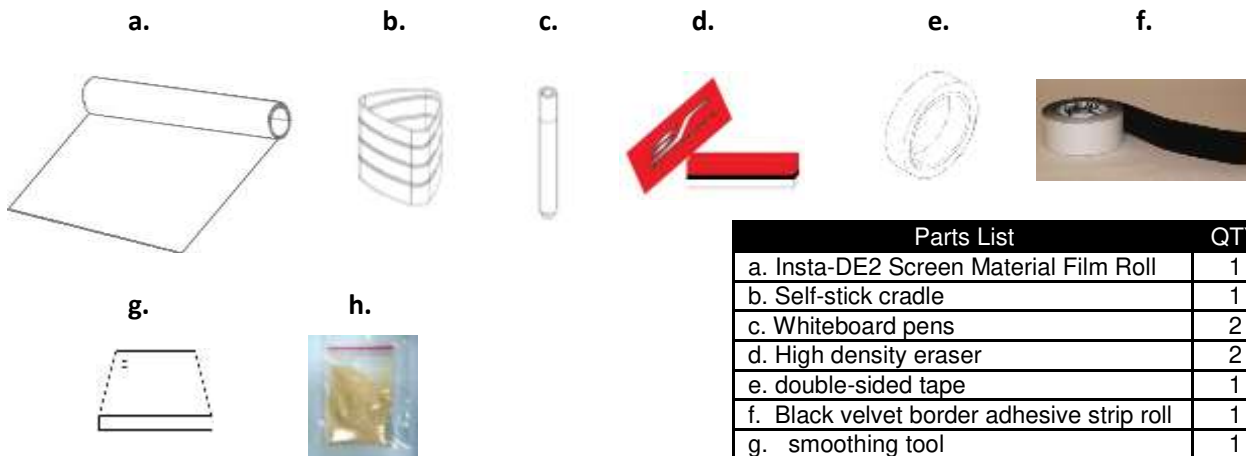
## Product specifications

Specifications:	
Color display	White
Thickness	2.1mm
Material composition	High molecular weight copolymer of Terephthalic acid ethyl esters
Weight	1m <sup>2</sup> /377g
Temperature	At room temperature
Gain	1.1
Viewing Angle	180°

## What's in the package

Please make sure all parts listed below are included.

Notes: For best results and maximum product longevity, ***ONLY use a high density whiteboard Eraser.***



Parts List	QTY
a. Insta-DE2 Screen Material Film Roll	1
b. Self-stick cradle	1
c. Whiteboard pens	2
d. High density eraser	2
e. double-sided tape	1
f. Black velvet border adhesive strip roll	1
g. smoothing tool	1
h. Powder compound	1-3

Model Number	1 bag(25g)	2 bags (50g)	3 bags (75g)
IWB86VW2	X		
IWB97XW2	X		
IWB105HW2	X		
IWB4.2x10W2	X		
IWB4.2x20W2		X	
IWB4.2x30W2			X
IWB114XW2	X		
IWB5x10W2	X		
IWB5x20W2		X	
IWB5X30W2			X

## Tools required (not included)



### **Preparing the installation surface:**

The Insta-DE 2 product is to be solely installed on flat surfaces. Prepare the flat wall/surface by cleaning the entire area. Do not install if any imperfections are found on the surface such as drilled holes, glue/tape residue, dents, etc. We recommend sanding the area first to make sure you have a clean flat and smooth surface. Failure to remove such imperfections can damage the product. The dry erase function of this product requires a smooth writeable surface and Elite Screens is not responsible should these instructions are not be properly followed.

**Take the Insta-DE 2 film out of the package, unroll it on a clean surface and lay it on its front side.**

**Before applying the Insta-DE 2, the application surface must be dry, clean, smooth, and structurally sound.**

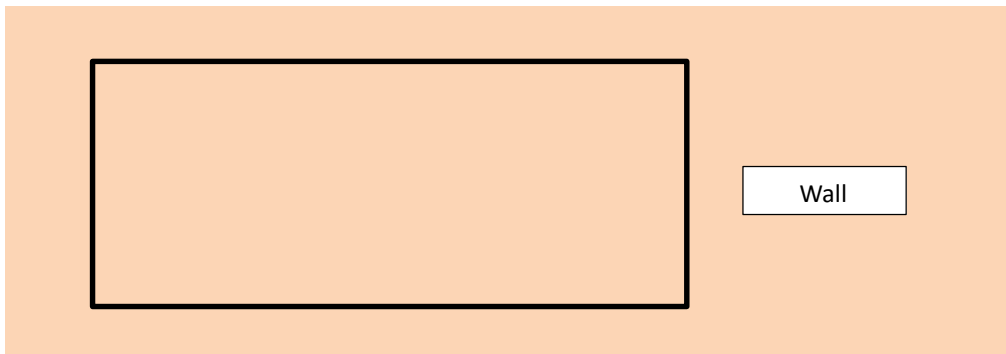
1. *Clean the surface to remove any dirt, grease, and wax.*
2. *Fill any depressions or holes with a drywall compound*
3. *Use sandpaper to smooth any bumps and blemishes. Sand until the surface is completely flat.*
4. *Level-5 finish to the surface and apply one coat of Professional R-35 primer*

**The warranty of this product will be voided if any bubbling occurs due to the use of an after-market spray adhesive or if the screen was applied on to a textured wall.**

### **Installation**

We strongly recommend two or more people for this installation.

1. Smoothen the entire surface of the wall with sandpaper.
2. Clean the entire surface with a wet sponge or lint-free towel to remove any dust left from sanding the wall.
3. Measure and outline the screen installation area.



4. Apply the included double-sided tape over the line. Do not remove the top film of the tape
5. Pour an entire powder bag into a paint bucket filled with 27 oz. of room temperature water and stir until all lumps are gone and the compound has a syrup texture. This will make the mixture into an adhesive compound for sticking the film to the wall.

***Note: Once the compound has been mixed, it must be applied within 4 hours to ensure a sealed installation of the Insta-DE2 to the wall. Use one bag for every 27 oz. of water.***

6. Pour the mixture into a paint tray and dip the roller.
7. Evenly apply a thin coat of adhesive to the surface evenly with a paint roller.
8. Wait for the adhesive to dry.

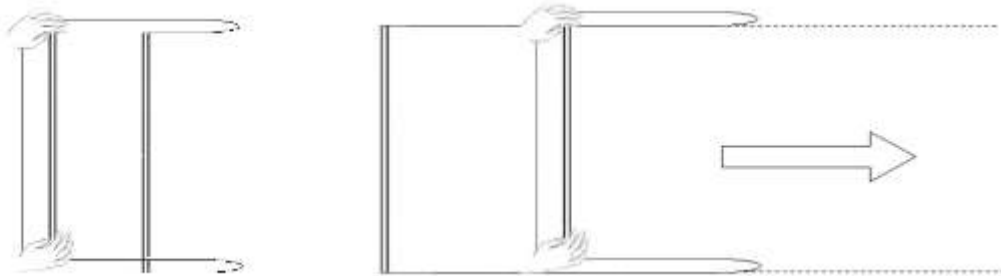
9. Sand the surface until no adhesive residue remains.

10. Apply one coat of Professional R-35 Primer (do not allow it to dry) and immediately apply the Insta-DE2 to the wall.

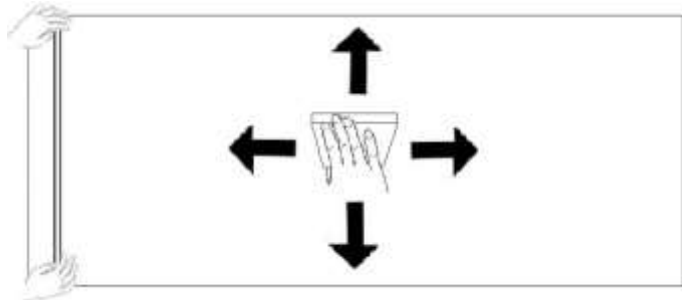
11. Unroll the Insta-DE2 on to the wall lining it up with the drawn line from Step 3.

**Note 1: Each side of the material is labeled FRONT/BACK**

**Note 2: Do not allow the material to wrinkle or crease to avoid permanent damage.**



12. Flatten the surface with a flexible wall smoothing tool in a 45-degree angle to avoid scratching the surface.



13. Lift edges and smoothen out any remaining air bubbles.

### **Caution**

The smoothing tool's edge is sharp. Carefully scrape the screen when removing air bubbles to avoid scratching the surface.

14. Peel off the top layer of the double-sided tape and flatten the screen's edges with the smoothing tool.

15. Use a soft damp towel or sponge to clean entire surface.

### **Tip**

1. In rare instances, High indoor temperature will cause the surface to expand and produce bubbles.

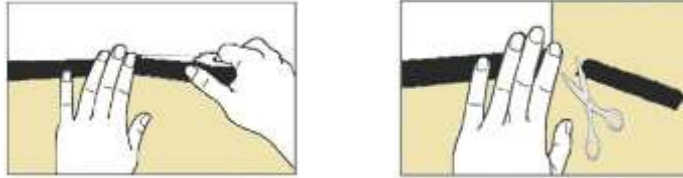
2. Because the back of the Insta-DE 2 is very smooth, the glue does not easily stick to the wall by itself. For this reason a coating of R-35 primer has to be applied to the wall.

3. Use a sharp utility knife to cut a small hole in the center of the bubble. Inject some Professional R-35 primer with a syringe and smooth out the Insta-DE 2 screen surface with a smoothing tool.

### Adhesive black velvet border installation

1. Measure the top/bottom and left/right sides of the Insta-DE2 screen to obtain the required length of the velvet border you will need to use for bordering your screen.

2. Peel a small portion off of the velvet border and place it about half an inch over the white area of the screen. Continue to peel off and roll out the remainder of the velvet border until you have reached the end and cut the edge.



*Note: For best results we recommend cutting the edge in a 45° angle.*

3. Repeat the process for the remainder of the sides until all sides are bordered as shown below.



4. Allow the compound to dry for approximately 24-hours before using the dry-erase feature of the Insta-DE2. Use only the included erasers to remove and erase dry-erase markings. For a deep clean, we recommend using a non-alcohol based dry-erase board cleaner with a soft microfiber cloth.

Elite offers a replacement kit (**part number ZER3**) which includes:

- 1 x bottle of 8.45 oz cleaning solution
- 1 x microfiber cloth
- 2 x high density foam erasers
- 2 x sets of dry-erase markers (4 total)

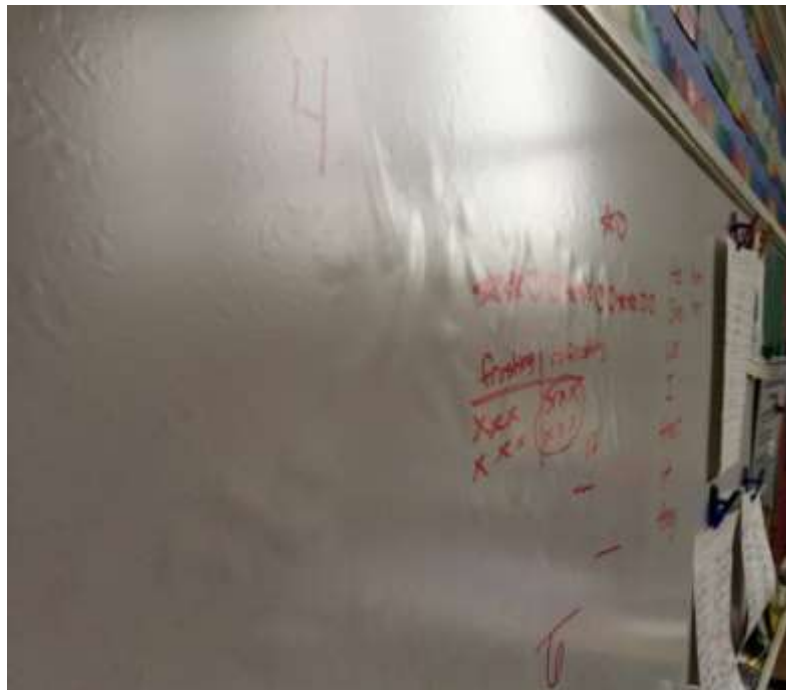


Contact your reseller or visit [shop.elitescreens.com](http://shop.elitescreens.com) for pricing and purchase.

### Safety Precautions:

- A. Avoid using sharp objects directly on the screen, which can result in permanently damaging the product and voiding your warranty.
- B. Creases or wrinkles caused by improper installation are not removable.

**Below are sample pictures of improper installations.**



The above pictures are the result of improper installations.

The surface to which you are installing this material to should be perfectly smooth. If in case the surface is uneven, it is recommended to place a smooth board over the desired space of the install first. This will eliminate any bubbling of the material over time.

For more information, technical support or your local Elite Screens contact, please visit [www.elitescreens.com](http://www.elitescreens.com)