



Limit switch adjustment instructions for CineTension B Series

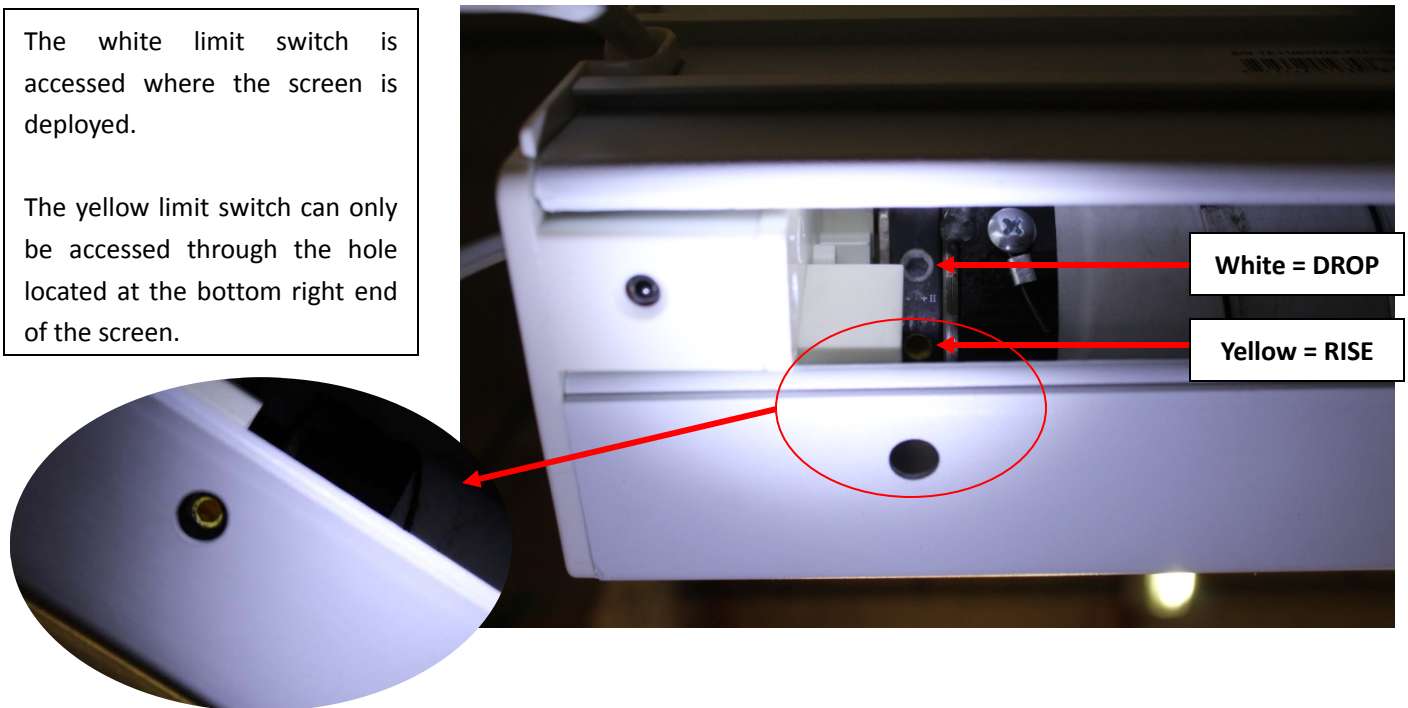
NOTE: Elite Screens does not recommend making unnecessary adjustments to the screen, as improper adjustments will damage the unit and may void your warranty.

For safety reasons, never disassemble the limit switch.

The upper and lower limit switches are located in the right end of the screen housing when facing the screen. Please refer to the fig. below to locate the upper and lower limit switches.

The white limit switch is accessed where the screen is deployed.

The yellow limit switch can only be accessed through the hole located at the bottom right end of the screen.



NOTE: When turning the limit switches, bear in mind that a full-circle turn in either direction will create a one inch adjustment.

- A. **If you over adjust the rise position**, the screen will attempt to go further into the case and cause it jitter and bounce.
- B. **If you over adjust the drop position**, the screen will begin to reverse itself back up.
- C. **Reversing the adjustments should bring the screen back to normal operation**

How to adjust the Retract (rise) position:

If the screen does not retract completely, use the following steps.

1. Press the **UP** button on the remote first to retract the screen as much as possible.
2. Use the Allen-wrench to turn the **RISE** (yellow) switch counter-clockwise. When you turn the **RISE** switch, the screen will retract correspondingly.
3. **Stop** rotating the switch once the weight bar is inside and in-line with the opening.

Warning: If you continue to rotate the switch once the weight bar is in-line with the opening, the screen will attempt to retract further inside and causing permanent damage to the screen. **DO NOT** over turn the switch.

4. If the screen retracts too far in, press the **DOWN** button on the remote to expose the limit switches. Rotate the **RISE** adjustment switch 1-2 turns clockwise. Then press the **UP** button on the remote to see the new retract position.

How to adjust the Drop (top black masking border) position:

Note: All electric screens come with standard top black masking and they cannot be dropped further. **DO NOT** use these instructions to try to get more out of your standard black masking drop. Use these instructions only if you have decreased the amount of your black masking and need to increase it back.

If you need to decrease the amount of the top black masking, use the following steps.

1. Press the **DOWN** button on the remote first to fully deploy the screen.
2. Use the Allen-wrench to turn the **DROP** (white) switch clockwise. When you turn the **DROP** adjustment switch, the screen will raise.
3. **Stop** turning the switch once the screen reaches the desired position.

Warning: If you over-turn the switch, the screen will raise too high, which may permanently damage the product.

4. If the screen rises too high, simply turn the **DROP** adjustment switch counter-clockwise. Press the UP button on the remote first and then press DOWN to see the new drop position.

For more information, technical support or your local Elite Screens contact, please visit

www.elitescreens.com