



## Tubular Motor Replacement Instructions

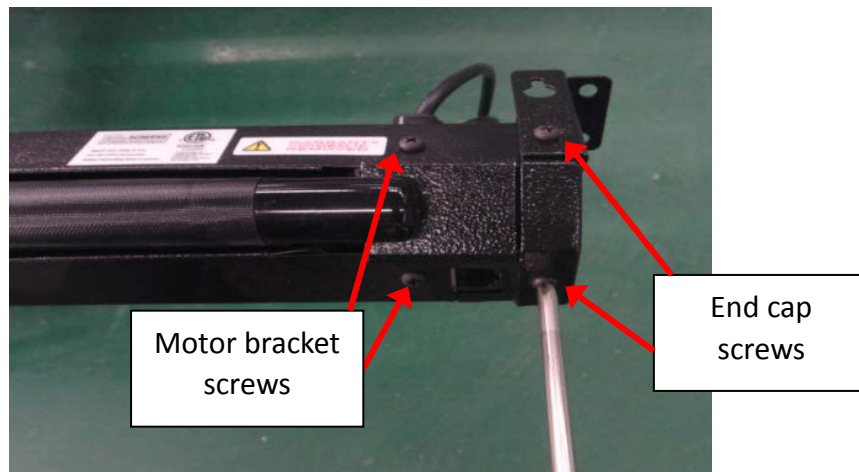
### for VMAX2 models 135" and above / Spectrum models 135" and above

For technical support or further assistance, call 877-511-1211 x604

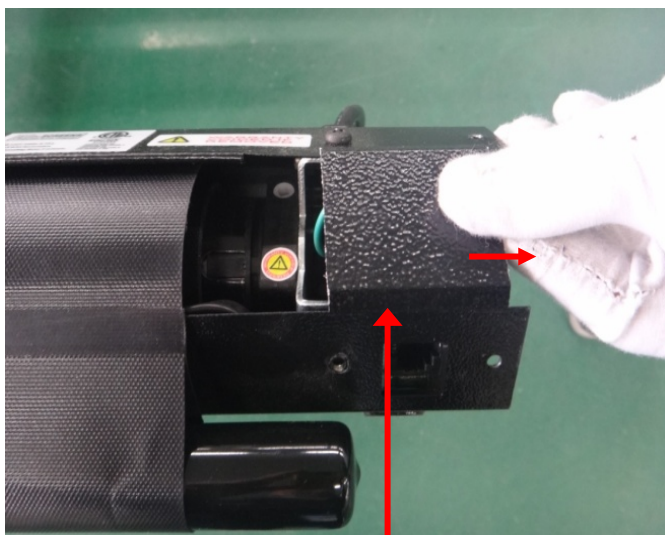
#### ATTENTION:

Elite Screens does not recommend making unnecessary adjustments to the screen, as **improper adjustments will damage** the unit and **void your warranty**.

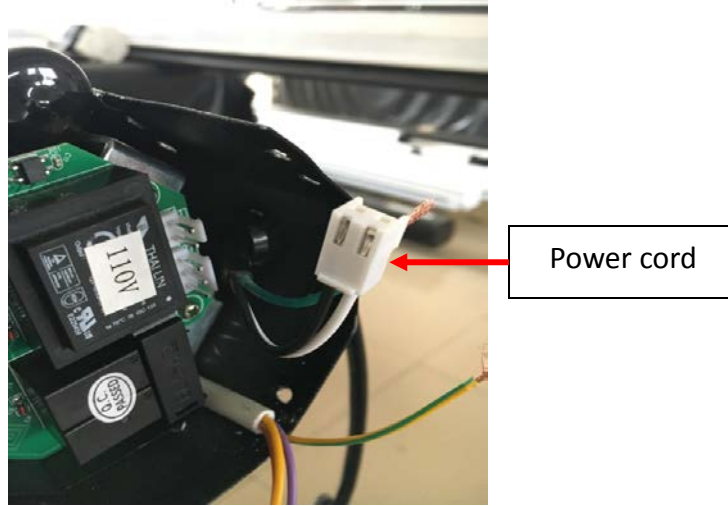
1. Remove the screws on the motor bracket and left end cap (facing the screen) with a Phillips screwdriver, then remove the end cap.



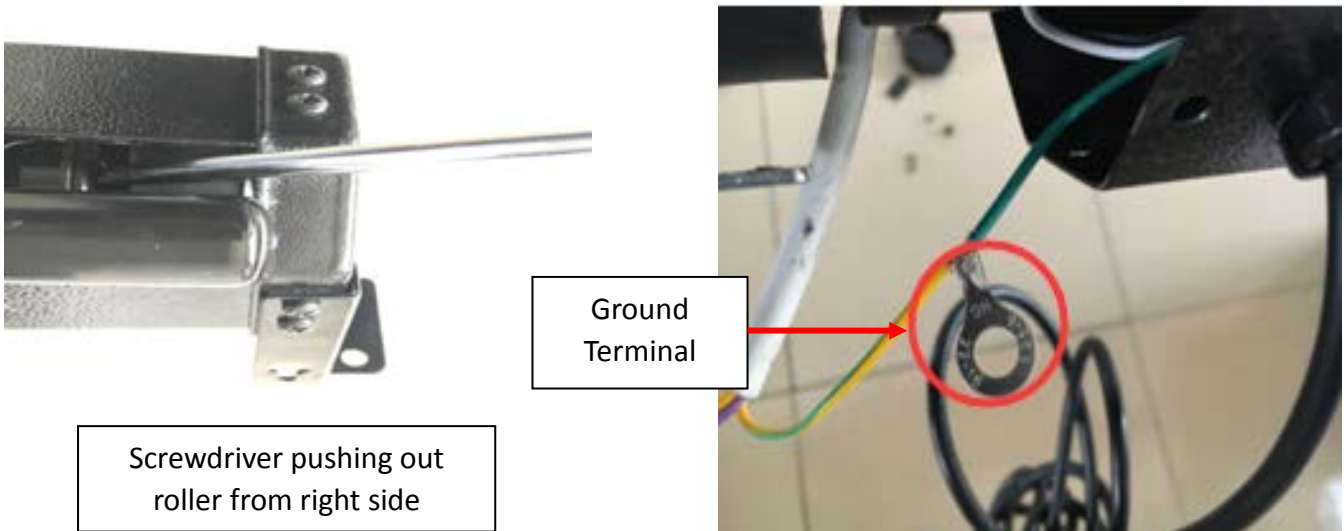
2. After removing the end cap, carefully remove the decorative sheet by pulling it outward towards the open end.



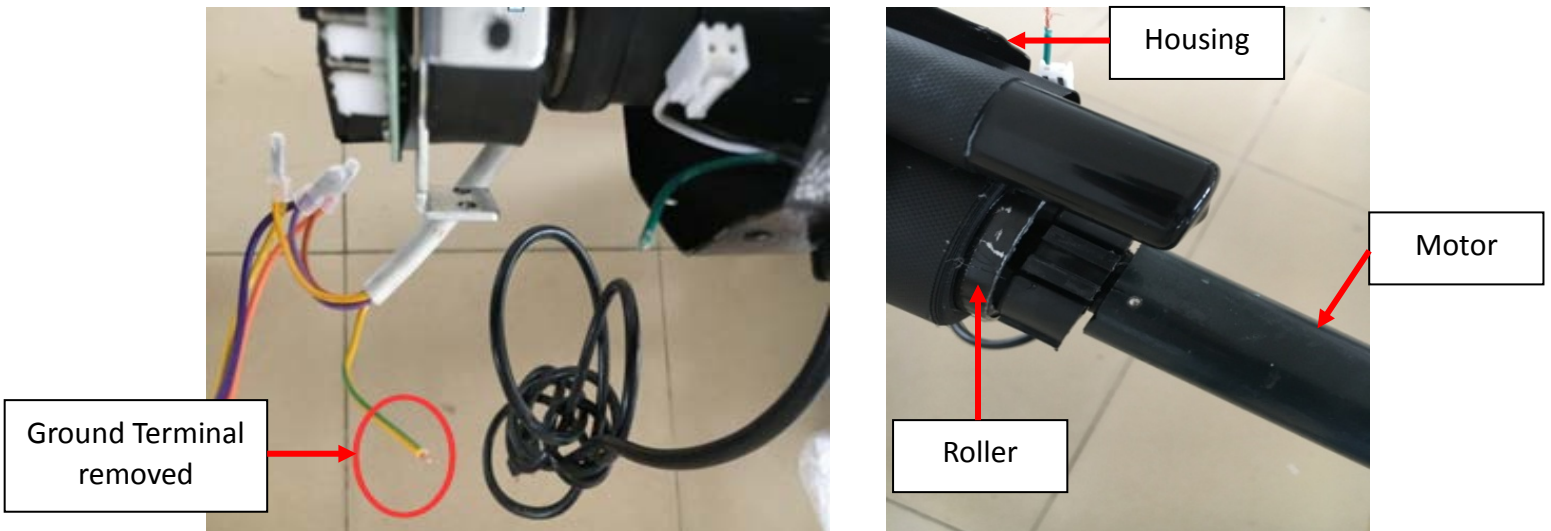
3. Remove the power cord and 3P cable, shown in the image below.



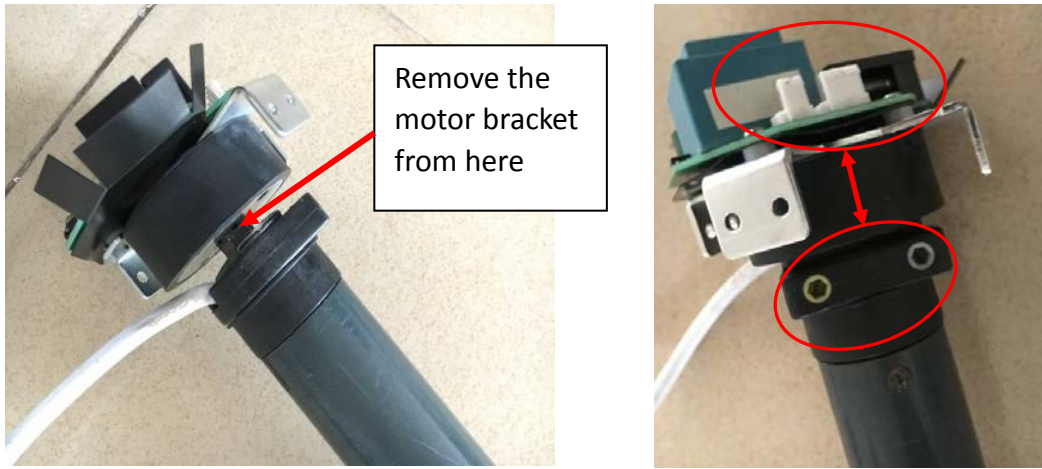
4. Using the screwdriver, at the right side end cap, push the roller out to expose the roller on the open left side end of the housing. Being sure not to snag or scratch the material on the housing, lift and pull the roller out from the left side enough to access the ground terminal.



5. Cut off the ground terminal and remove the motor.



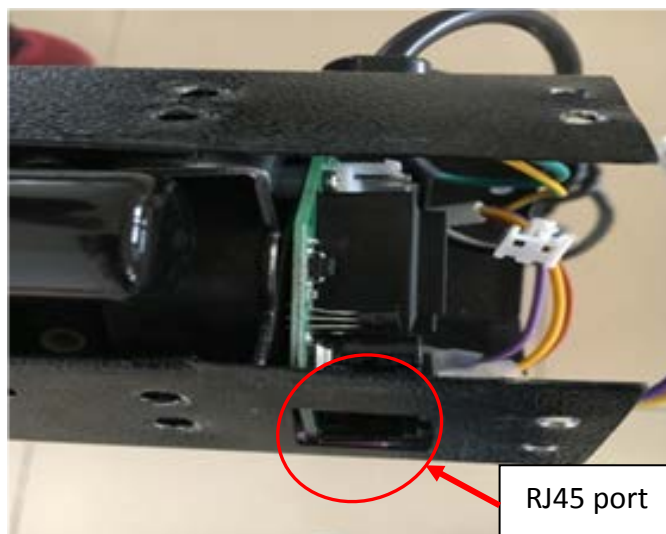
6. Separate the motor from the motor bracket and attach the same bracket to the new motor.



7. Install the new motor. Be sure to align the drive wheel with the ladder on the roller.

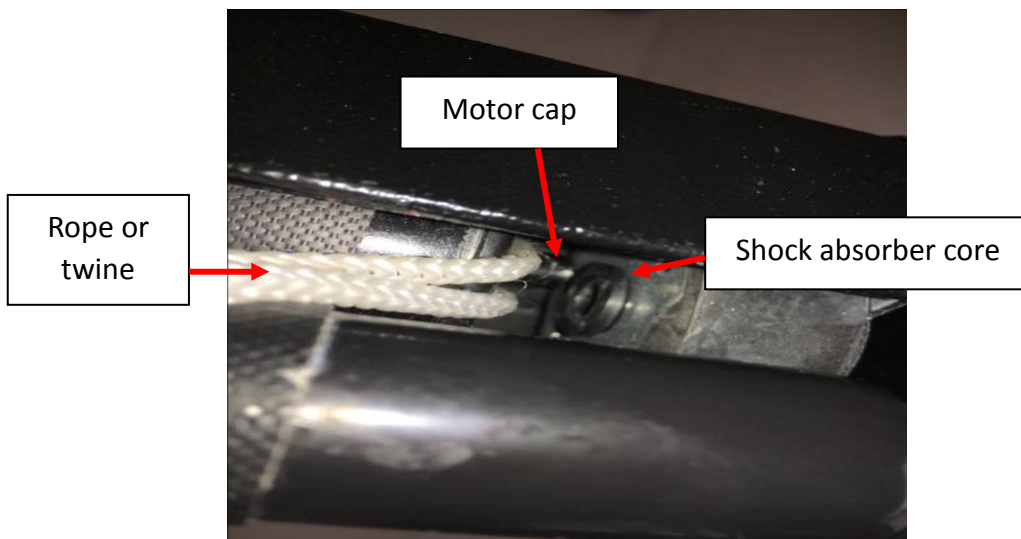


8. Place the bracket into the housing where the RJ45 port on the circuit board lines up with the hole on the housing.

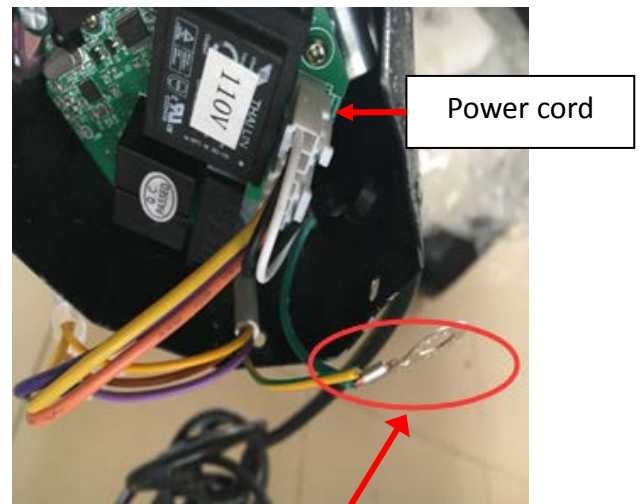
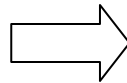
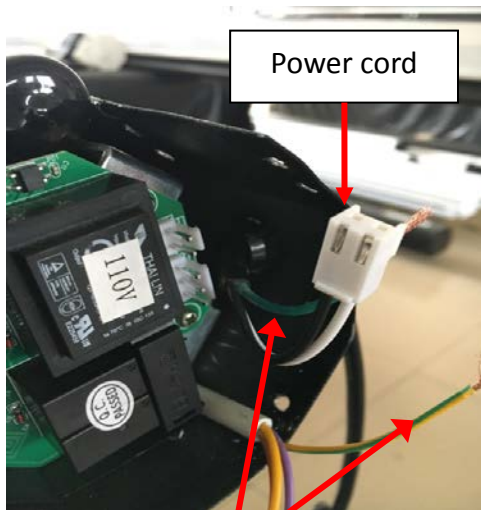


9. Two people are suggested for this step. While one person keeps hold of the left side, the other will need to loop thin rope or twine around the motor cap on the right side of the roller. (This will help guide the roller back into the housing and reconnect with the shock absorber core.) Push in the left side end cap back into the housing while carefully guiding the right end of the roller into place.





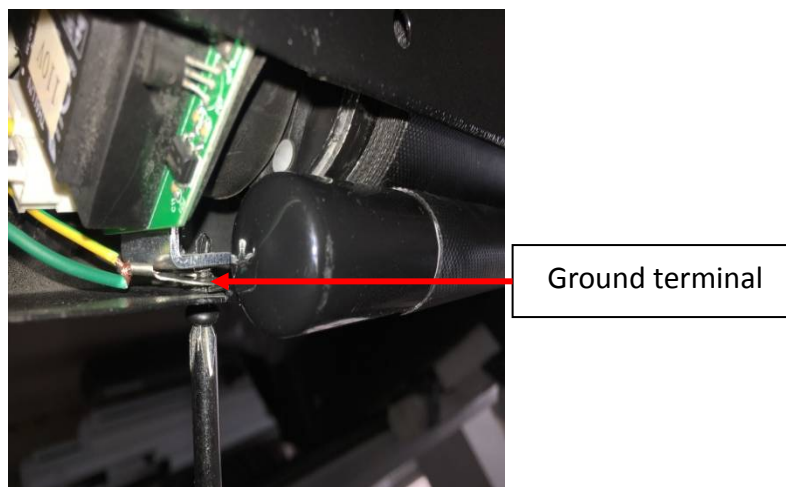
**10.** After inserting the motor into the housing, insert the power cord and the 3P cable into the circuit board. Then connect the power cable to the ground of the motor cable and clamp it with the ground terminal.



Power cable/Motor cable

Power cable/Motor cable clamped with ground terminal

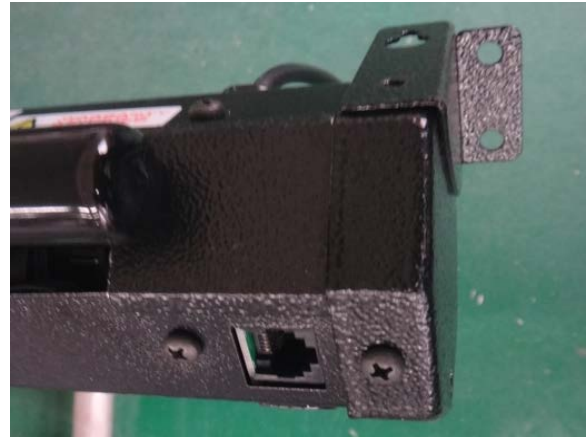
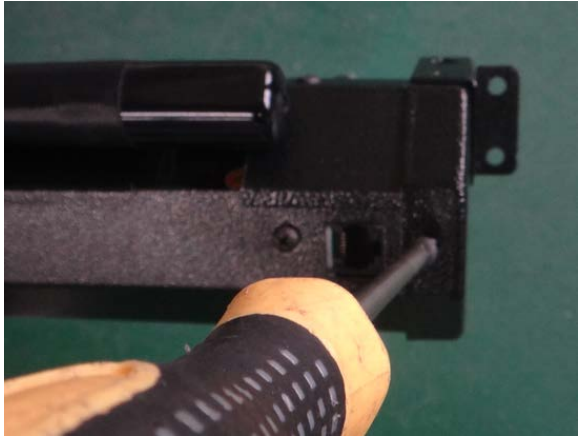
**11.** Affix the ground terminal to the bracket and housing with screws removed in step 1.



12. Replace the decorative sheet removed in step 2.



13. Replace and secure the end cap with screws removed in step 1.



Finished assembly.

**NOTE:** After replacing the tubular motor, you may need to adjust the limit switch to drop the screen at your preferred height.

**For a local Elite Screens contact or Technical Support, please visit**

**[www.elitescreens.com](http://www.elitescreens.com)**