



## Evanescence/Evanescence Tension Vertical Limit Switch Adjustment Instructions

**Caution:** The screen's Top Black Masking is already set to its maximum distance. There is **NO** extra black top drop in the roller. Attempting to increase the drop will damage the motor and **VOID** your warranty with Elite Screens. **DO NOT** use these instructions to try and get more out of your standard black masking drop. Please contact Elite Screens before making any adjustments.

- A. **If you over adjust the rise position**, the screen will attempt to go further into the case and cause it jitter and bounce.
- B. **If you over adjust the drop position**, the screen will begin to reverse itself back up.
- C. **Reversing the adjustments should bring the screen back to normal operation**

### 1. Allen Wrench



Fig. 1

5/32" Allen wrench

### 2. Limit switch adjustment holes

**Note:** The limit switches can only be viewed when the screen material is completely deployed. They are located on the right side of the screen when facing the back.

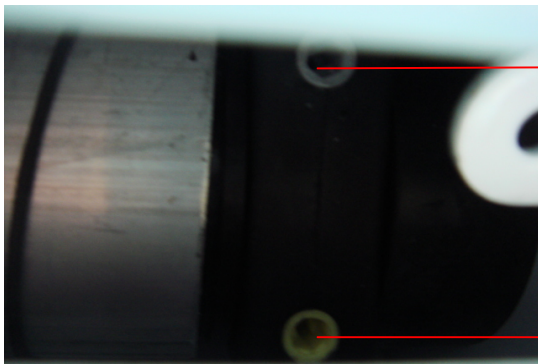


Fig. 2

UP adjustment switch

DOWN adjustment switch

**Note:** When turning the limit switches, bear in mind that a full-circle in either direction will create a one inch adjustment.

### 3. How to adjust the Retract (rise) position (shown in Fig. 3 to Fig. 6)



Fig. 3

If the screen does not retract completely (as shown in Fig. 3), use the following steps.



Fig. 4

Press the UP button on the remote first to retract the screen as much as possible.



Fig. 5

Use the allen-wrench to turn the **UP** switch counter-clockwise

**NOTE: Adjustment should be made while facing the back of the screen.**



Fig. 6

One full turn will retract your screen by 1". In order to see adjustment, deploy and retract the screen. **(Warning:** If you continue to rotate the switch once the weight bar fits flush with the casing, the screen will attempt to retract further, causing damage to the unit. **DO NOT** over turn the switch).

If the screen retracts too far in, press the **DOWN** button on the remote to expose the limit switches. Rotate the **UP** adjustment switch 1-2 turns clockwise. Then press the **UP** button on the remote to see the new retract position.

#### 4. How to adjust the position of the top black masking border

(shown in Fig. 7 to Fig. 9)

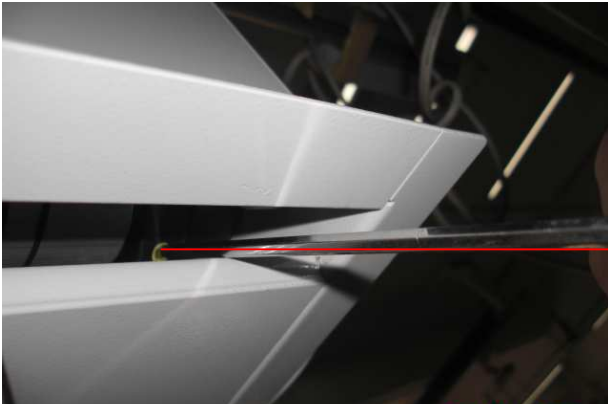
**Note:** All electric screens come with standard top black masking and they cannot be dropped further. **DO NOT** use these instructions to try to get more out of your standard black masking drop.



Fig. 7

If you need to decrease the amount of top black masking, refer to the following steps.

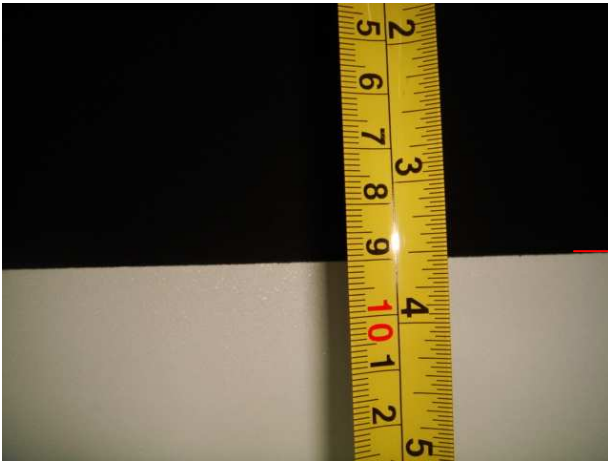
Use your remote control to fully lower the screen.



Use your allen-wrench to turn the **DOWN** switch clockwise.

**NOTE: Adjustment should be made while facing the back of the screen.**

Fig. 8



One full turn equals 1" of decreased drop. In order to notice the adjustment, retract and deploy the screen. **Warning:** Over adjusting the switch will damage the motor and void the warranty.

Fig. 9

**Note: As a rule, Elite Screens does not recommend making any unnecessary adjustments to the screen, as improper adjustment will damage the unit.**

**Please contact Technical Support for assistance @ (877) 511-1211.**