



Yard Master Electric Tension

Product Brochure



Yard Master Electric Tension

The Yard Master Electric Tension Series is an electric screen with 2-way projection material that is IP33 rated for wind/rain penetration for outdoor applications. The tab-tension design supports a front/rear projection surface with perfect uniform flatness.



**IP33
RATED**

Screen Material

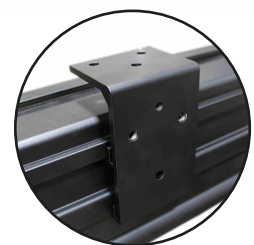
- WraithVeil Dual is a 2-directional front/rear projection material
- 0.8 Gain brightness with a 150° viewing angle on either side
- Designed for outdoor use without compromising its home theater visual appeal
- Standard 4-side black masking borders absorb projector overshoot while enhancing visual contrast
- Compatible with Standard, Short, and Ultra-Short Throw Projectors
- Available in diagonal sizes 100"/120"/135" and 150" with a 16:9 aspect ratio

Design & Installation

- Dynamic indoor home theater quality with the durability of an outdoor product
- Ideal for backyards, patios, pool decks, and recreation room installations
- Rust resistant aluminum floating brackets allow flush wall/ceiling installations to be perfectly centered
- Floating eyebolt construction enables hanging installations
- Tab-tension design provides uniform flatness over the entire screen surface for use with standard, short-throw and UST projectors
- Radio Frequency remote for long range operation without line of sight required
- Wireless 12-volt projector trigger included to synchronize the projector's power cycle for drop/rise operation of the screen

Quality & Reliability

- Rust-proof metal components - housing, roller tube, brackets, and weight bar
- Tubular motor allows swift operation and superior weight tolerance and lifespan
- 2-year limited manufacturer's warranty, and 3-year warranty for ENR-G - Education, Non-profit, Religious and Government/Military organizations
- Lifetime Tech Support with Elite's Professional Service Team through Email, Web Chat or Call Toll-Free



Yard Master Electric Tension Series

Model	Screen Diag. & Aspect Ratio	View Height (in)	View Width (in)	N.W. (lbs.)	G.W. (lbs.)	N.W. (Kgs)	G.W. (Kgs)	Packing Dimension (LxHxW)	Gain	Screen Material	Case Color
OMS100HT-ELECTRODUAL	100" (16:9)	49.0	87.2	42.3	59.6	19.2	27.0	113.6"x7.9"x8.3"	0.8	WraithVeil Dual	Black
OMS120HT-ELECTRODUAL	120" (16:9)	58.8	104.6	50.1	68.2	22.7	30.9	131.9"x7.9"x8.3"	0.8	WraithVeil Dual	Black
OMS135HT-ELECTRODUAL	135" (16:9)	66.2	117.7	55.7	74.5	25.3	33.8	146.2"x7.9"x8.4"	0.8	WraithVeil Dual	Black
OMS150HT-ELECTRODUAL	150" (16:9)	73.5	130.7	60.9	81.1	27.6	36.8	159.5"x7.9"x8.5"	0.8	WraithVeil Dual	Black

Yard Master Electric Tension Dimensions Table

Model	Screen Diag. & Aspect Ratio	View Width (A1)	Overall Length w/o Bracket (A2)	Ceiling bracket hole distance (A3)	Screen Width (A4)	Weight Bar Length (A5)	L/R Black Masking (A6)	Overall Height w/ Ceiling Bracket (B)	View Height (B1)	Screen Height (B2)	Top Black Masking (B3)	Bottom Black Masking (B4)	End Cap Height w/ Bracket (B5)	End Cap Width w/ Ceiling Bracket (C)	End Cap Height w/ Ceiling Bracket (C1)
OMS100HT-ELECTRODUAL	100" (16:9)	87.2	106.0	74.5	97.4	103.6	5.1	68.7	49.0	63.4	12.0	2.4	4.4	4.6	5.3
OMS120HT-ELECTRODUAL	120" (16:9)	104.6	124.2	92.7	115.6	121.9	5.5	78.5	58.8	73.2	12.0	2.4	4.4	4.6	5.3
OMS135HT-ELECTRODUAL	135" (16:9)	117.7	137.3	105.8	128.7	134.9	5.5	85.9	66.2	80.6	12.0	2.4	4.4	4.6	5.3
OMS150HT-ELECTRODUAL	150" (16:9)	130.7	150.4	118.9	141.8	148.0	5.5	89.2	73.5	83.9	8.0	2.4	4.4	4.6	5.3

Unit: inch

Model	Screen Diag. & Aspect Ratio	View Width (A1)	Overall Length w/o Bracket (A2)	Ceiling bracket hole distance (A3)	Screen Width (A4)	Weight Bar Length (A5)	L/R Black Masking (A6)	Overall Height w/ Ceiling Bracket (B)	View Height (B1)	Screen Height (B2)	Top Black Masking (B3)	Bottom Black Masking (B4)	End Cap Height w/ Bracket (B5)	End Cap Width w/ Ceiling Bracket (C)	End Cap Height w/ Ceiling Bracket (C1)
OMS100HT-ELECTRODUAL	100" (16:9)	2214	2692	1892	2474	2632	130	1745	1245	1610	305	60	112	118	135
OMS120HT-ELECTRODUAL	120" (16:9)	2657	3155	2355	2937	3095	140	1994	1494	1859	305	60	112	118	135
OMS135HT-ELECTRODUAL	135" (16:9)	2989	3487	2687	3269	3427	140	2181	1681	2046	305	60	112	118	135
OMS150HT-ELECTRODUAL	150" (16:9)	3321	3820	3020	3601	3760	140	2266	1868	2131	203	60	112	118	135

Unit: mm

Note: Data Error ±1". The listed measurements are for general reference only. Please contact Elite Screens to verify product design and dimensions before attempting to integrate its products with any structural or furniture modification. Although a manufacturer may offer product advice, it may be taken or disregarded at the integrator's discretion. Elite Screens will not be held responsible or be otherwise liable for faulty installations.

